



ELLENDALE RESOURCES NL

ABN 67 061 836 708

Registered Office:

Level 2
45 Stirling Highway
Nedlands WA 6009
Australia

Postal Address:

PO Box 985
Nedlands WA 6909

Tel: (61 8) 9389 8799

Fax: (61 8) 9389 8327

20 February 2008

ASX Limited

Dear Sir / Madam

Ellendale Resources NL is pleased to announce results from the initial drill program on the Clarke River Project, Queensland.

- **Strong uranium result returned from initial Clarke River RC Drilling**
- **Intercept of 2 metres @ 0.08% U from drillhole 07RC005**
- **Result confirms and extends mineralised zone identified by Afmeco and Occidental Minerals in the 1970's**

Ellendale Resources NL, through its wholly owned subsidiary Northern Resources Pty Ltd, holds tenure over the Clarke River Uranium Project, located 180 kilometres west of Townsville in northern Queensland. The Clarke River Project is comprised of two granted Exploration Permits and three contiguous Exploration Permit Applications covering 1185 square kilometres in total.

During December 2007, Ellendale commenced RC drill testing of the Expedition Creek Prospect within the Project area. The drilling program was designed to validate and extend a strong uranium mineralised zones reported by historic explorers Afmeco and Occidental Minerals within the prospect area.

As reported in the December ASX Quarterly Report the most northerly hole in the program, **EX07RC05**, was drilled in close proximity to a uranium mineralised zone reported by Afmeco. The hole drilled into a distinctive layer of coarse lithic sandstone and conglomerate with small 3-12 mm black quartz clasts from 148-156 metres associated with strong scintillometer values. Geochemical assay results from this interval are now at hand and include encouraging downhole results of:

- **151-152 metre 1.0 metre @ 0.12% U**
- **152-153 metre 1.0 metre @ 0.04% U**

These results correlate well with the geology, stratigraphy and tenor of historic results (which included **0.9m @ 0.24% U**, **0.6m @ 0.34% U** and **0.6m @ 0.23% U**) but have also seemingly extended the known mineralised zone over 150 metres to the southeast. Full assay results from the target mineralised horizon are attached in Table 1.

As previously reported attempts to drill within and to the north of the known historic uranium mineralised area at Expedition Creek were frustrated by the early onset of the North Queensland wet season. Access tracks and drill pads have however been constructed and will ensure that drilling can recommence shortly after the cessation of the wet season.

Two targets in similar structural settings to the Expedition Creek Prospect have been located within 1.7 km of the main prospect and will also be drilled early in the 2008 field season.

Table 1. RC drill hole EX07RC05 – 1 metre split assay results

Hole No	From	To	Scintillometer cps	U ppm
EX07RC05	147	148	120	49
	148	149	600	56
	149	150	500	44
	150	151	600	69
	151	152	3000	1250
	152	153	1000	403
	153	154	300	38
	154	155	400	8
	155	156	300	5

Assays carried out by ALS Chemex Laboratories using scheme ME-XRF05 with U detection limit of 4 ppm

The information in this report is based on information compiled by Mr Ian Moody, who is a Member of the Australian Institute of Mining and Metallurgy and a full time consultant geologist with First Principle Mineral Exploration Company Pty Ltd. Mr Moody has over 20 years experience as a geologist.

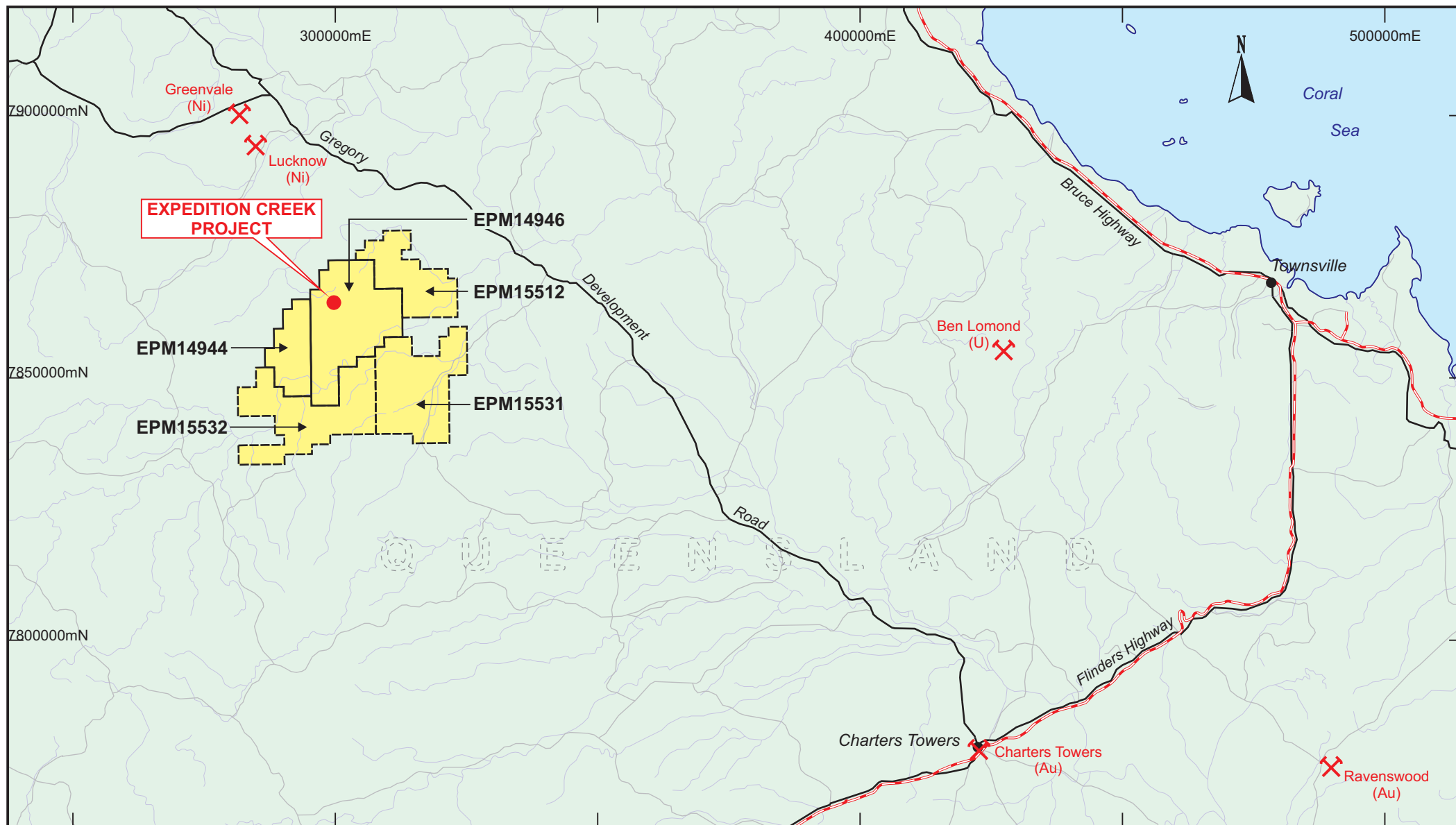
Yours faithfully

ELLENDALE RESOURCES NL

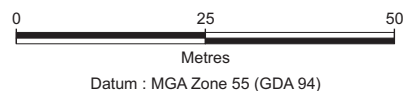


DAVID McARTHUR

Company Secretary



- Tenement - granted
- Tenement - application
- Major mine
- City
- Railway
- Highway, road
- Drainage



Compiled : I Moody	Date : Feb 2008
Drawn : Nicol CAD	Date : Feb 2008
Scale: 1:500,000	

Ellendale Resources NL

Tenement Location Map

Reference : Ellendale Resources\Location plan.cdr