



Chubb Lithium Project in Québec advanced.  
Hamersley Iron Ore projects kicking off.

RIU Explorers Conference February 2024  
ASX:BUR

**Burley**  
Minerals Ltd



# Disclaimer & Forward-Looking Statements

This presentation has been prepared by Burley Minerals Ltd “BUR”. This document contains background information about BUR current at the date of this presentation. The presentation is in summary form and does not purport to be all inclusive or complete. Recipients should conduct their own investigations and perform their own analysis in order to satisfy themselves as to the accuracy and completeness of the information, statements and opinions contained in this presentation.

This presentation is for information purposes only. Neither this presentation nor the information contained in it constitutes an offer, invitation, solicitation or recommendation in relation to the purchase or sales of shares in any jurisdiction.

This presentation does not constitute investment advice and has been prepared without taking into account the recipient’s investment objectives, financial circumstances or particular needs and the opinions and recommendations in this presentation are not intended to represent recommendations of investments to persons. Recipients should seek professional advice when deciding if an investment is appropriate. All securities involve risks which include (among others) the risk of adverse or unanticipated market, financial or political developments. To the fullest extent permitted by law, BUR, its officers, employees, agents and advisors do not make any representation or warranty, express or implied, as to the currency, accuracy, reliability or completeness of any information, statements, opinions, estimates, forecasts or other representations contained in this presentation. No responsibility for any errors or omissions from this presentation arising out of negligence or otherwise are accepted.

This presentation may include forward-looking statements. Forward-looking statements are only predictions and are subject to risks, uncertainties and assumptions which are outside the control of BUR. Actual values, results or events may be materially different to those expressed or implied in this presentation. Given these uncertainties, recipients are cautioned not to place reliance on forward looking statements. Any forward-looking statements in this presentation speak only at the date of issue of this presentation. Subject to any continuing obligations under applicable law, BUR does not undertake any obligation to update or revise any information or any of the forward-looking statements in this presentation or any changes in events, conditions, or circumstances on which any such forward looking statement is based.

The information in this Presentation that relates to Exploration Results and Mineral Resources is extracted from the Company’s prospectus dated 26 May 2021 and lodged with the Australian Securities and Investments Commission (ASIC) (Prospectus). The Company confirms that it is not aware of any new information or data that materially affects the Exploration Results or Mineral Resources information included in the Prospectus. The Company confirms that the form and context in which the Competent Person’s findings are presented have not been materially modified from the Prospectus.

The Yerecoin Main Mineral Resource Estimate was reported in 2014 under the 2012 Edition of the “Australasian Code for Reporting of Exploration Results, Mineral Resources and Ore Reserves”. The Mineral Resource Estimate was detailed in ASX:RAD announcement dated 8th September 2014 “Resource Upgrade for Yerecoin Project” The Yerecoin South Mineral Resource Estimate was reported in 2014 under the 2012 Edition of the “Australasian Code for Reporting of Exploration Results, Mineral Resources and Ore Reserves”.

## Relevant Announcements Referenced

12 February 2024	Burley’s Broad Flat Well Iron Ore Project delivers high-grade iron assay results
7 February 2024	Additional Spodumene Bearing Dykes Intercepted at Chubb
22 January 2024	Further Pollucite Mineralisation at Chubb Lithium Project
29 December 2023	Burley grows Canadian Lithium exposure with additional ~1,100km2 tenure in Manitoba
27 December 2023	Burley receives positive metallurgy results for Chubb Lithium Project
12 December 2023	High Value Pollucite Mineralisation Intersected - amended
30 October 2023	Pegmatite swarms up to 182m in aggregate thickness in Chubb North drilling
3 July 2023	Further high-grade lithium assays confirm strike of over 560m at the Chubb Lithium Project
6 June 2023	High-grade lithium results confirmed at Chubb, Quebec
8 February 2023	Acquisition of Chubb Lithium and Gascoyne Lithium Projects Complete
17 November 2022	Burley to Acquire 100% of Canadian and Gascoyne Li Projects

## Competent Persons Statement

The information in this Presentation that relates to Iron Ore Exploration Results and Mineral Resources is based on information compiled or reviewed by Mr Gary Powell, who is the Technical Consultant to the Company. Mr Powell is a Member of the Australian Institute of Geoscientists and has sufficient experience of relevance to the styles of mineralisation and the types of deposits under consideration, and to the activities undertaken, to qualify as a Competent Person as defined in the 2012 Edition of the Joint Ore Reserves Committee (JORC) Australasian Code for Reporting of Exploration Results, Mineral Resources and Ore Reserves. Mr Powell consents to the inclusion in this report of the matters based on information in the form and context in which it appears.

The information in this Presentation that relates to Lithium Exploration Results is based on and fairly represents information and supporting documentation compiled by Mr David Crook, a Competent Person who is a member of The Australasian Institute of Mining and Metallurgy (AusIMM) and the Australian Institute of Geoscientists (AIG). Mr Crook is a Director to Burley Minerals. Mr Crook has sufficient experience relevant to the style of mineralisation under consideration and to the activity which he is undertaking to qualify as a Competent Person and defined in the 2012 edition of the “Australasian Code for Reporting of Exploration Results, Mineral Resources and Ore Reserves”. Mr Crook consents to the inclusion in this announcement of the matters based on this information in the form and context in which it appears. The information in the Presentation relating to Lithium exploration results and drilling results.

# Burley Minerals Ltd - Projects

## Lithium Projects in world class Tier 1 mining jurisdictions of Canada

### Chubb Lithium Project, Québec, Canada – 100% Interest

- Advanced spodumene and pollucite project – spodumene bearing pegmatites mapped, drilled and modelled<sup>1</sup>
- More than 13,000m diamond core drilling completed since April 2023.
- Within 10 km of Québec's only operating lithium mine and concentrator, and 25 km from the major mining centre of Val d'Or.

### New acquisition of Manitoba Lithium Projects, Canada – 100% Interests<sup>2</sup>

- Recent acquisition of 5 lithium projects covering approximately 1,100km<sup>2</sup>, providing exposure to Superior Province, an emerging and extremely underexplored lithium region.

## Western Australia Iron Projects with well positioned infrastructure

### Broad Flat Well Project – 100% interest

- Approximately 660,000m<sup>2</sup> of sub-outcropping CID mineralisation with thicknesses between 2 and 10 m evident in breakaways with rock chip assays averaging 56.3% Fe, 115 km from Karratha.

### Cane Bore CID Prospect – 100% interest

- 28kms of outcropping Channel Iron Deposit (CID), 400m wide on average, 90 km from Onslow.

### Yerecoin Iron Project, Western Australia – 70% Interest –

- 120km to the northeast of Perth.
- JORC 2012 compliant Inferred & Indicated Mineral Resource of 246.7Mt capable of producing a concentrate at >68% Fe<sup>3</sup>

<sup>1</sup> ASX Release 17 November 2022 – Burley to Acquire 100% Ownership of Strategic Canadian and Gascoyne Lithium Projects

<sup>2</sup> ASX Release 29 December 2023 – Burley grows Canadian Lithium exposure with additional ~1,100km<sup>2</sup> tenure in Manitoba

<sup>3</sup> ASX Release 23 September 2021 and 12 February 2024.

<sup>4</sup> May 26, 2021 Company Prospectus – Section 10 for Independent Technical Assessment Report

# Burley Minerals Ltd - Corporate Overview

## Corporate Structure

ASX Code	BUR
Current Shares on Issue	103.3m
Performance Rights	5.65m
Cash ( 31 Dec 2023)	\$2.0m
Share Price (9 Feb 2024)	\$0.09
Market Cap (9 Feb 2024)	\$9.3m

Chart generated on 9/2/2024 at 7:44 am



### Bryan Dixon, BCom CAANZ AGIA ACG

### Non-Executive Chairman

Mr Dixon has extensive experience in the mining sector and the management of publicly listed companies. Mr Dixon has held numerous executive and director roles with emerging resource companies. He was a joint winner of the Mines and Money Asia-Pacific Mining Executive of the Year in 2017. Mr Dixon was previously employed in various mining and exploration roles focused on gold, lithium and lithium processing and is also a Non-Executive Director of Aura Energy Ltd. Bryan has a broad skill set across project acquisition, exploration, feasibility, financing, development, and operations of mining projects.

### Mr Stewart McCallion, P. Eng., Member AusIMM

### Managing Director and CEO

Mr McCallion has extensive experience in the mining industry across both Australia, and Canada where he was raised and educated. Mr McCallion is a mining professional with more than 25 years of resource industry experience, with exposure to a variety of mineral commodities including lithium, iron, gold, copper, and nickel. Stewart's experience spans from exploration to development, stakeholder engagement and regulatory approvals, through to operations. Mr McCallion has worked with well-regarded companies that include Hancock Prospecting, Roy Hill Holdings, Vale Inco and Lycopodium. Through this diversity of resource project experience, Stewart has honed his abilities to determine business objectives, critically evaluate opportunities and risks, and manage multi-disciplinary teams. Mr McCallion has broad technical qualifications holding a Bachelor of Science (Geological Engineering) degree from Queen's University, Kingston, Canada, and a Master of Engineering Management from Curtin University's Graduate School of Business, Western Australia.

### David Crook, BSc, GAICD, Member AusIMM

### Non-Executive Director

Mr Crook is an experienced Director with over 40 years' experience as a geologist and company director with a demonstrated discovery and production record in lithium, caesium, nickel and gold. Mr Crook has led lithium-focussed teams exploring LCT pegmatites at Mavis Lake and Raleigh, Canada (now Critical Resources), Dome North (Essential Metals Limited) and Medcalf (Charger Metals NL) all advancing spodumene deposits, and also lead the discovery and mining of the Sinclair Mine, Australia's only Caesium mine. This includes 16 years as Managing Director of ASX-listed Pioneer Resources Limited from its successful listing and was Managing Director of Charger Metals NL from incorporation until March 2023.

### Jeff Brill, B Eng (hons)

### Non-Executive Director

Mr Brill is a project manager with strong experience in the mining and oil & gas sectors. Previous roles include Project Manager, Project Engineer, General Manager and Managing Director. Mr Brill has built project teams from the ground up to successfully execute a variety of projects and is an owner of engineering consultancy Avora and Environmental consultancy Ecologia. Mr Brill was previously Managing Director of Engenium, where he delivered numerous studies, project management, detailed design engineering and full EPCM services to mining industry clients as they transitioned into production.



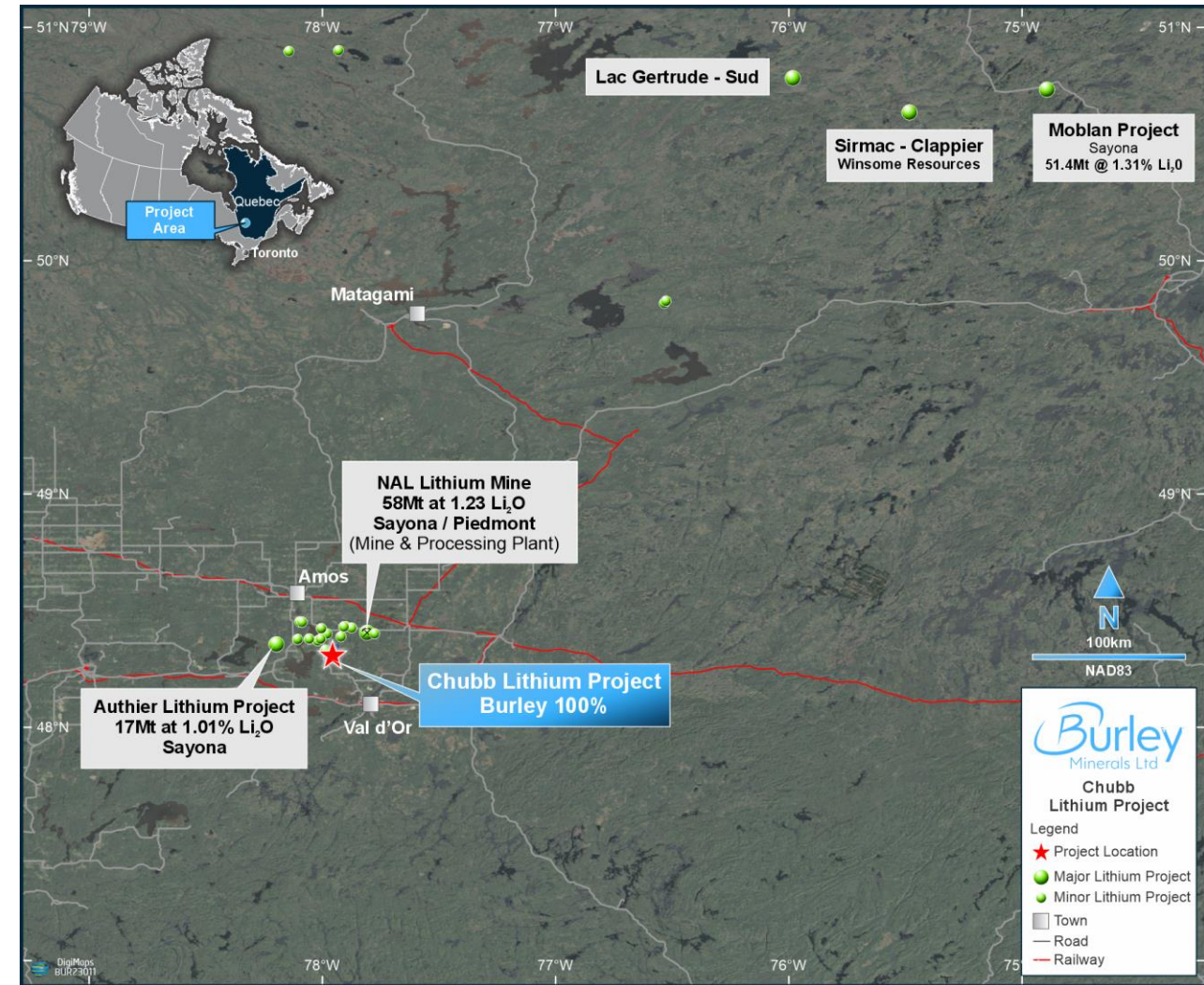
# Chubb Lithium Project - World Class Québec Lithium Province

## Excellent Tier 1 Lithium Province

- Located in the southwest corner of Québec, Canada and within 550 km of Montreal.
- Proximal to the only hard-rock spodumene mine and concentrator in Canada – NAL JV Plant.
- Full-year access to Chubb Lithium Project from Val d'Or, Québec within 25 km.

## Infrastructure

- Local skilled labour force with extensive exploration and mining capabilities.
- Sealed road access located within 3km of Project.
- Low cost, hydroelectric power accessible.
- Rail networks and multiple port export options available for DSO or Concentrate.
- Advantageously located close to North American battery manufacturing markets.



Chubb Lithium Project Location Plan



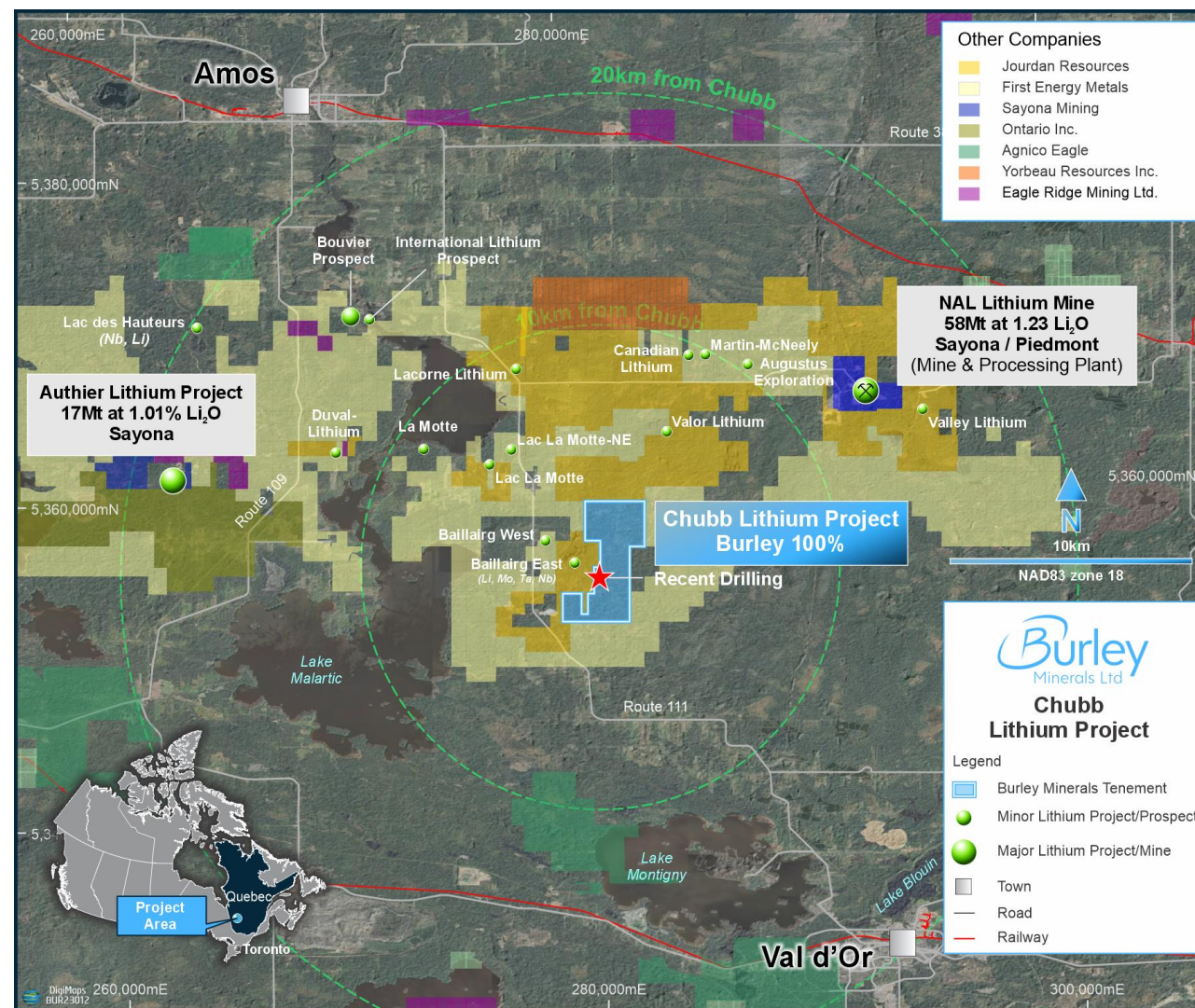
# Chubb Lithium Project - Historic Drilling and Close to Mine & Concentrator

## Historic Drilling and Mineral Claims

- Historic drilling at Chubb Central confirmed the presence of spodumene bearing lithium pegmatites in shallow, multi-stacked parallel dykes extending along strike for more than 600m, and corridor 240m wide.
- Exploration at Chubb has confirmed the presence of multiple parallel spodumene-bearing dykes in the central west region of the Mineral Claims.
- Total Mineral Claims totalling 1,509 ha.
- Chubb located on relatively flat ground with established roads and tracks within the Mineral Claims.

## Working Mines and Concentrator

- Chubb Lithium Project is located 10km North American Lithium mine, operations, and Mineral Resources, totalling 58Mt@1.2 %  $\text{Li}_2\text{O}^5$ .
- Authier Lithium Project will operate as a satellite Mine for the NAL J.V. Concentrator.

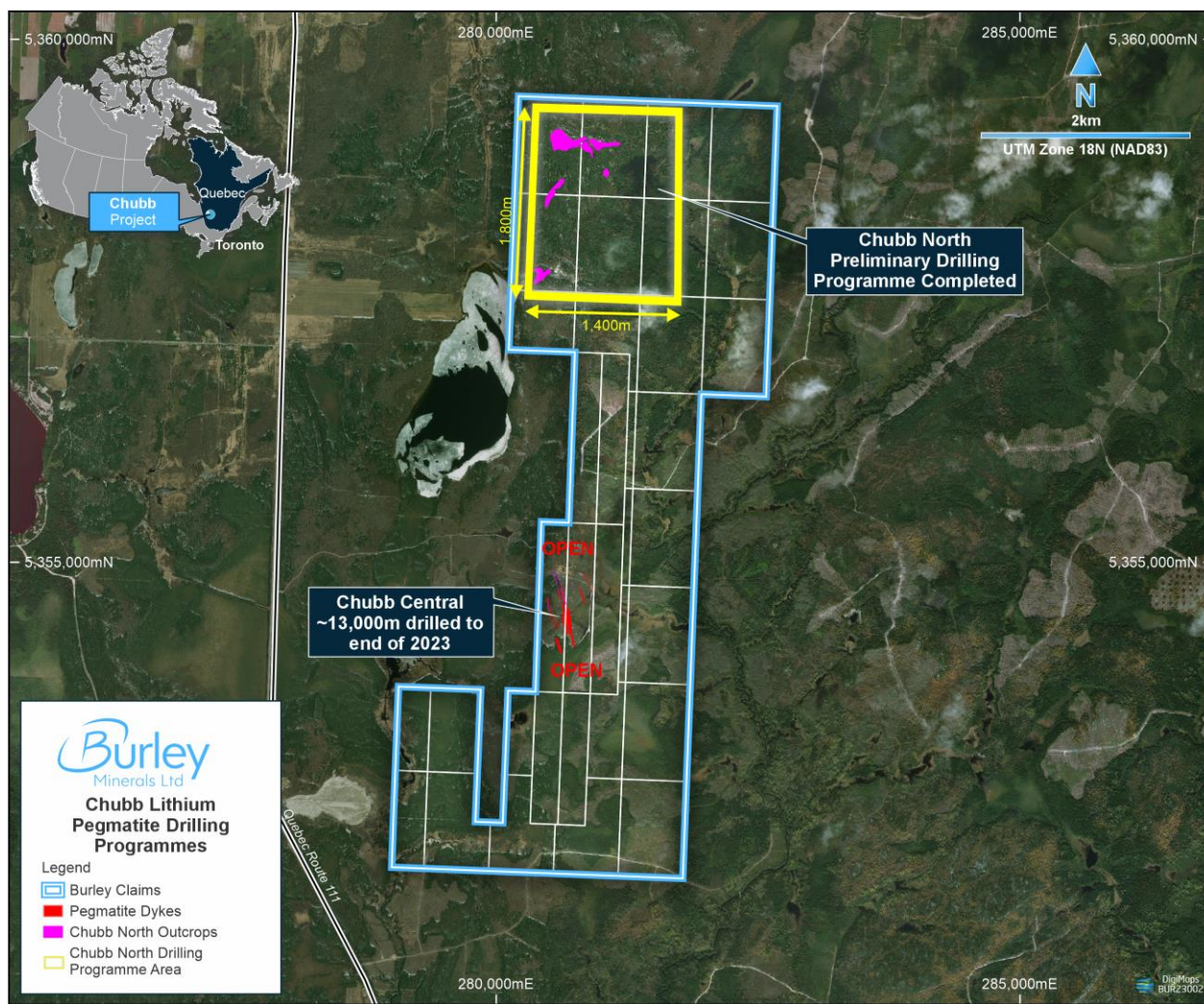


Chubb Lithium Project near Val d'Or, Québec and the NAL Operation

<sup>5</sup> Sayona Mining Limited ASX Release 14 April 2023 – Definitive Feasibility Study Confirms NAL Value With A\$2.2BNPV



# Chubb Lithium Project - Drilling Targets and Phase Drilling Program



Chubb Lithium Project Overview: 35 Mineral Claims over 1,509 Ha

## Systematic approach to exploring the whole project

- Drilling aimed at expansion of Chubb Central mineralized zone.
- Main Dyke striking more than 600 m and open down-plunge to the south.
- Additional spodumene-bearing dykes intersected to the East and West of the Main Dyke.
- Value-adding pollucite intersected over 60 m in the Main Dyke, exemplifying very evolved LCT pegmatite.
- Strong geochemical indications of lithium fertility at Chubb North.
- Pegmatite outcrops over an area more than 200 ha at Chubb North, with pegmatite drill intersections extending more than 200 m deep.



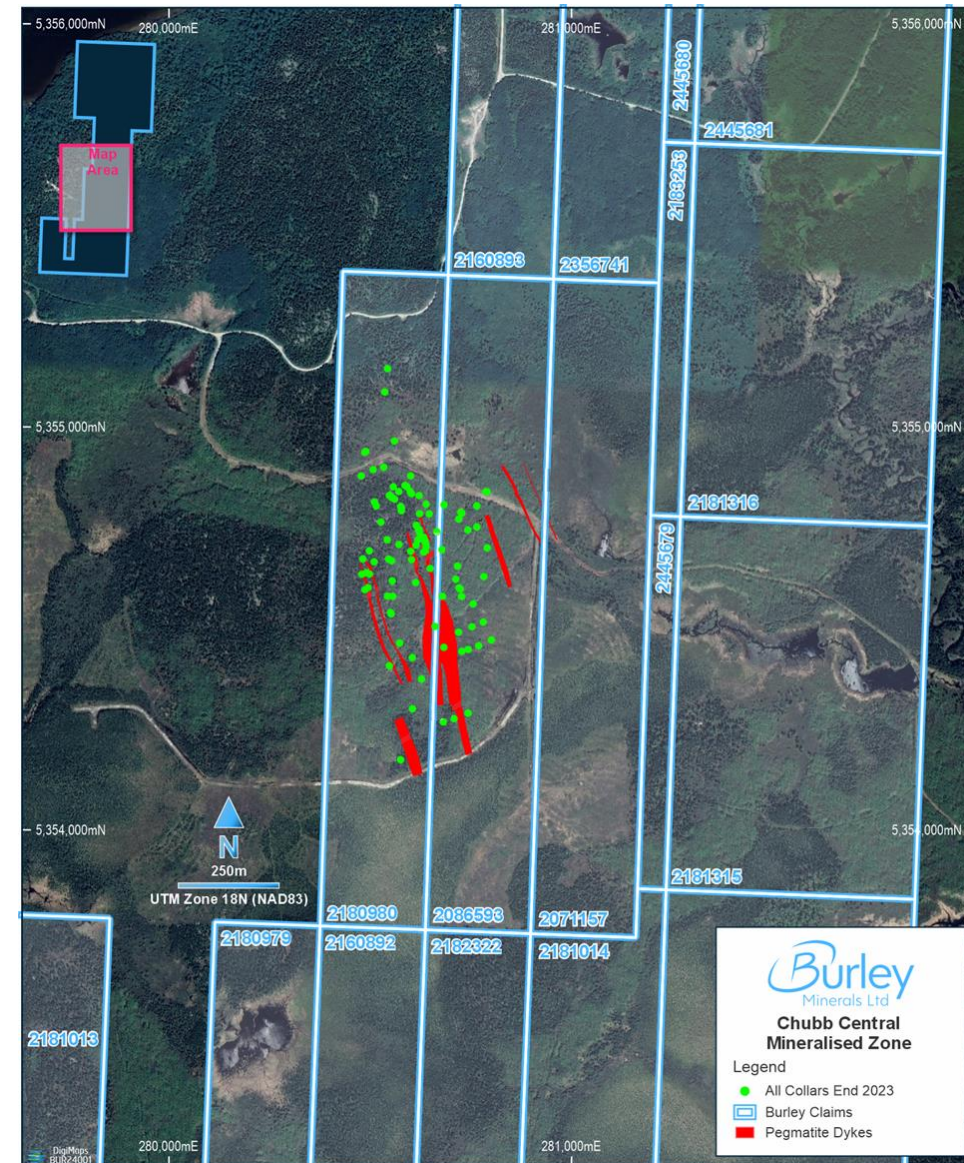
# Chubb Lithium Project - High-grade Lithium Assays Confirm Strike of >600m

## Proven Spodumene Mineralisation at Chubb Central<sup>1</sup>

- Chubb Central has spodumene-bearing pegmatite with a **strike of at least 600m**, extending **from surface to below 250m depth**.
- More than 13,000m diamond drilling Chubb Central since in April 2023.
- Assays from 2023 diamond core holes intersections across multiple parallel dykes including:
  - 11m at 1.70% Li<sub>2</sub>O from 333m CLP08a
  - 10.1m at 1.03% Li<sub>2</sub>O from 170m CLP08a
  - 9m at 1.34% Li<sub>2</sub>O from 92m CLP003
  - 9.1m at 1.6% Li<sub>2</sub>O from 79 CLP055
  - 7.0m at 1.2% Li<sub>2</sub>O from 173m CLP045
  - 6.1m at 1.2% Li<sub>2</sub>O from 16m and 6.1m at 1.0% Li<sub>2</sub>O CLP065
  - 8.2m at 1.31% Li<sub>2</sub>O from 130.4m CLP010
  - 7.7m at 1.30% Li<sub>2</sub>O from 80.1m CLP008
  - 6.9m at 1.4% Li<sub>2</sub>O from 14m CLP067

## Positive metallurgy results at Chubb Central<sup>2</sup>

- Preliminary results indicate excellent lithium recoveries of 72% for high grade and 60% for low grade with both achieving >6% Li<sub>2</sub>O commercial concentrate grades.
- Ore sorting technologies have the potential to provide greater beneficiation efficiency through pre-concentration for either shipment or conventional Dense Media Separation (DMS or HLS, Heavy Liquid Separation).



### Chubb Central Mineralised Zone Detail

1. ASX Releases dated 3 July 2023, 30 Oct 2023 and 7 Feb 2024..

2. ASX Release dated 27 Dec 2023 “Burley receives positive metallurgy results for Chubb Lithium Project”



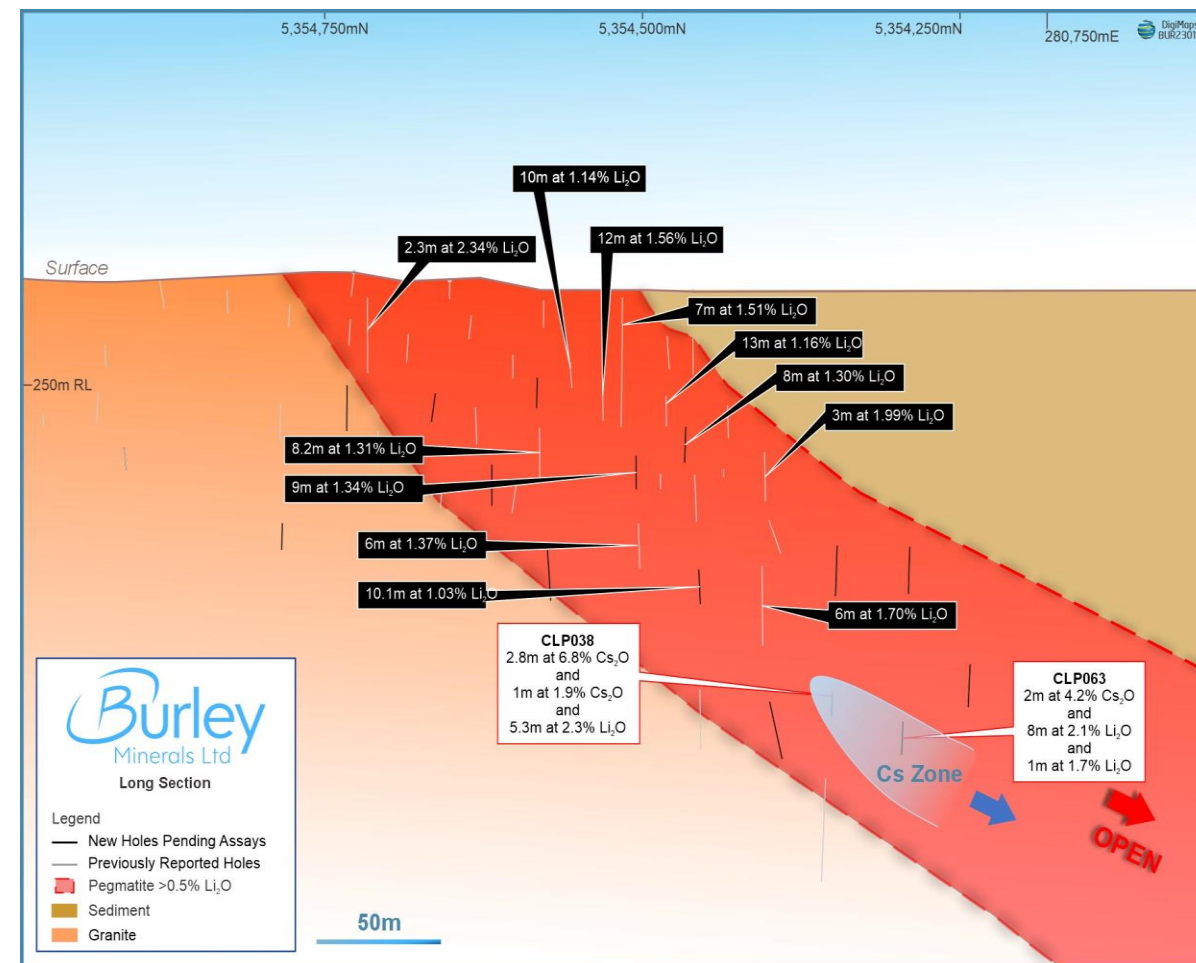
# High Value Caesium Pollucite Mineralisation at Chubb Lithium Project

## Proven Caesium Pollucite Mineralisation at Chubb Central<sup>1</sup>

- High value pollucite mineralisation intersected in holes CLP-038 and CLP-063 through the spodumene bearing Main Dyke at Chubb Central;
- Assay results showing both high grade caesium pollucite and spodumene:
  - **2.8 m at 6.8% Cs<sub>2</sub>O & 5.3m at 2.3% Li<sub>2</sub>O** CLP-038
  - **4.0m at 2.4% Cs<sub>2</sub>O incl. 2.0m at 4.2% & 11.0m at 1.7% Li<sub>2</sub>O** CLP-063
- Hole CLP-063 60m south of the CLP-038 intersection and is open down plunge.
- High grade spodumene + pollucite = very high value mineralisation.

## About Pollucite

- Pollucite is the premium caesium-bearing mineral, classified as critical by the USA and Canada, and is rarely available in economic deposits.
- Only three pollucite mines have ever operated and none are mining pollucite currently – Tanco Mine (Manitoba), Sinclair Mine (WA) and Bikita Mine (Zimbabwe).
- The chief use of caesium to-date is as a specialty oil well fluid, caesium formate, however a range of other high-value chemicals are used in specialty projects.

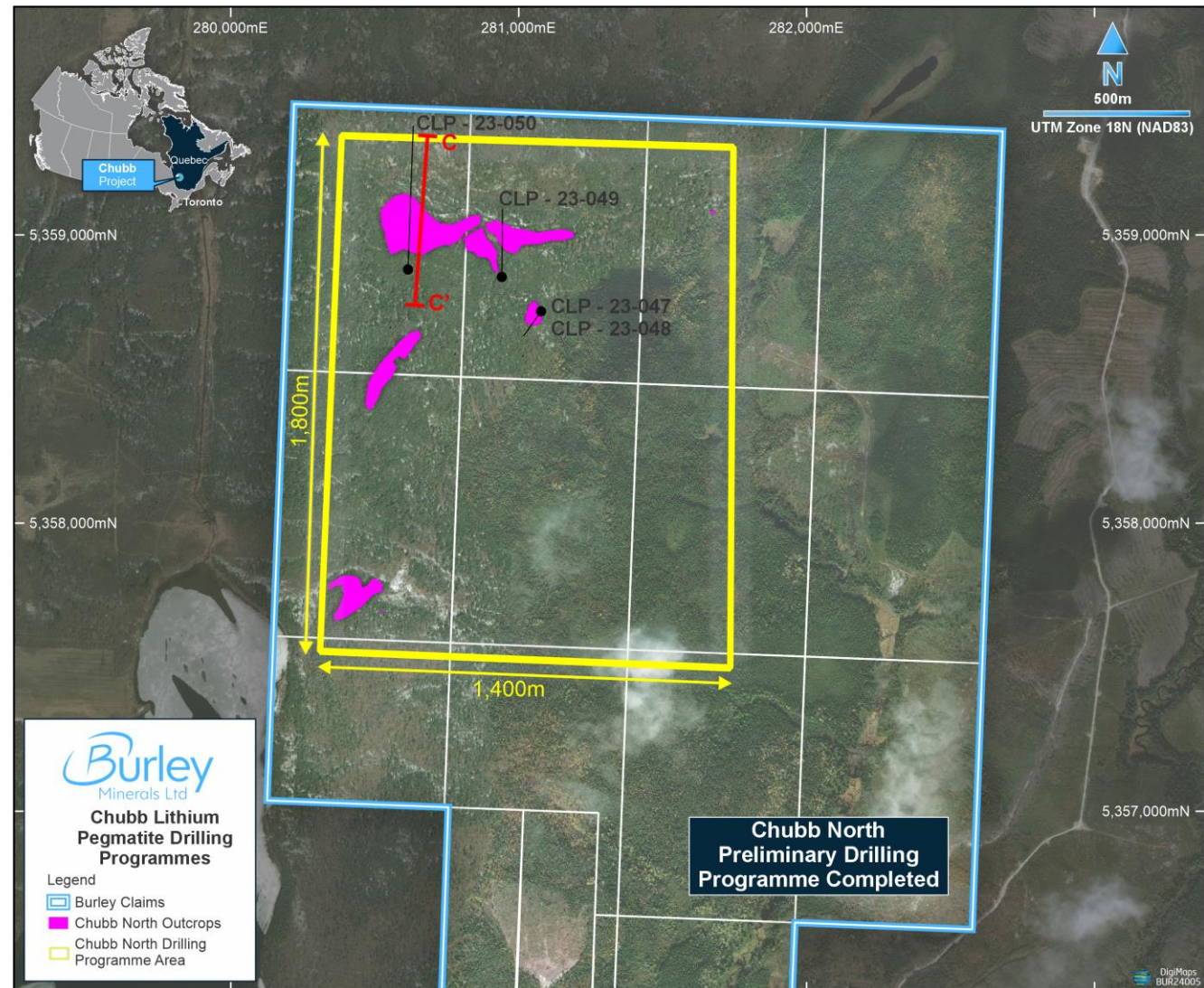


**Long section of main dyke showing caesium pollucite mineralisation being an extension of the lithium spodumene mineralisation which are both open down plunge.**

<sup>1</sup> ASX Releases dated 12 Dec 2023 and 22 Jan 2024.

# Chubb North: 6 Large Pegmatite Prospects

- Mapping and field pXRF mineral geochemistry completed in 2023 identifies multiple pegmatite targets.
- Geochemical analysis indicates that pegmatites are 'evolved' and fertile for lithium mineralisation.
- Outcropping pegmatites extend over an area greater than 200 hectares.
- Preliminary drilling program completed.
- Pegmatite intersections extend more than 200 m depth.
- Additional drilling has been planned and permitted to fully test all of the pegmatite targets.



Detail of the Chubb North prospect showing size of outcropping pegmatite targets



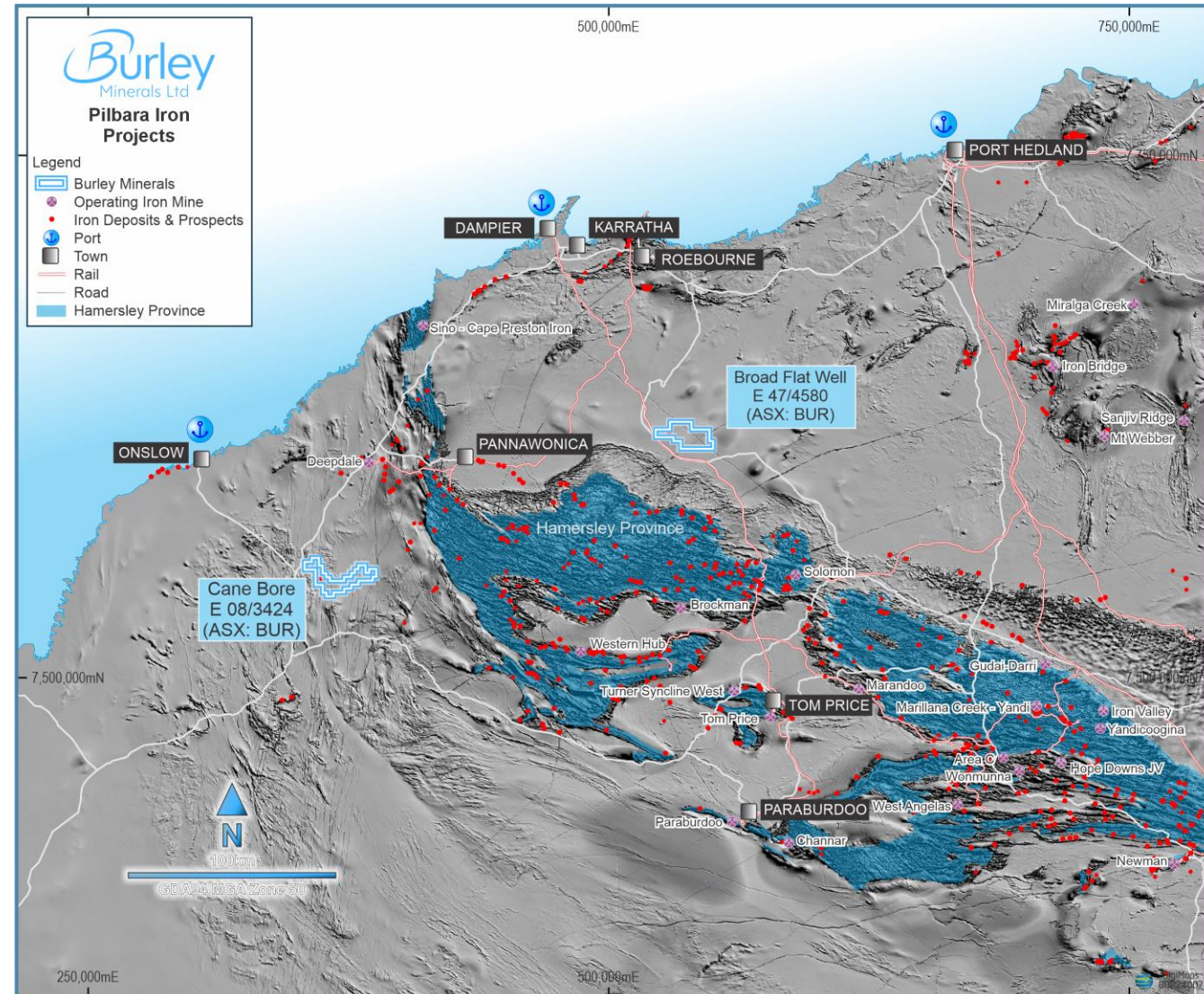
# Hamersley Iron Projects – 100% Burley

## BROAD FLAT WELL – E47/4580

- Approximately 115 km from Karratha and Dampier Port via the sealed Roebourne - Wittenoom Road.
- High-lying and accessible CID deposits
- Preliminary rock chip samples indicate maximum grades of 59.4% Fe and average grades of 56.3% Fe over 66 Ha.
- Multiples other CID targets identified.
- Planning permitting underway for initial RC drilling programme.

## CANE BORE - ELA 08/3434

- Approximately 90 km from Onslow and 3 km east of the Northwest Coastal Highway.
- Multiple CID deposits extending over more than 20 km.
- Flora and fauna surveys completed, and Conservation Management Plan submitted to the DBCA.
- Heritage agreements executed.



Broad Flat Well and Cane Bore Iron Ore Projects, Pilbara WA



# Yerecoin Iron Project – 70% Burley

**LOCATION** - 120km NNE of Perth via Great Northern Highway

**MINERAL RESOURCE** - JORC 2012 compliant Mineral Resource (Inferred and Indicated) of 247Mt – see Appendix 1

- Exploration drilling Programmes of Works have been granted by DMIRS for all three iron ore domains located within the Yerecoin Main Deposit Area(s).

## PROCESSING

- Metallurgical testwork confirms coarse grind size P80 106  $\mu\text{m}$  – for superior Fe product.
- Previous processing test work has confirmed the production of a premium iron concentrate at 68.1% Fe - suitable for Direct Reduction Iron (DRI) smelting.
- < 5% of the world's iron resources are suitable for “Green Steel” made from DRI.

## POWER

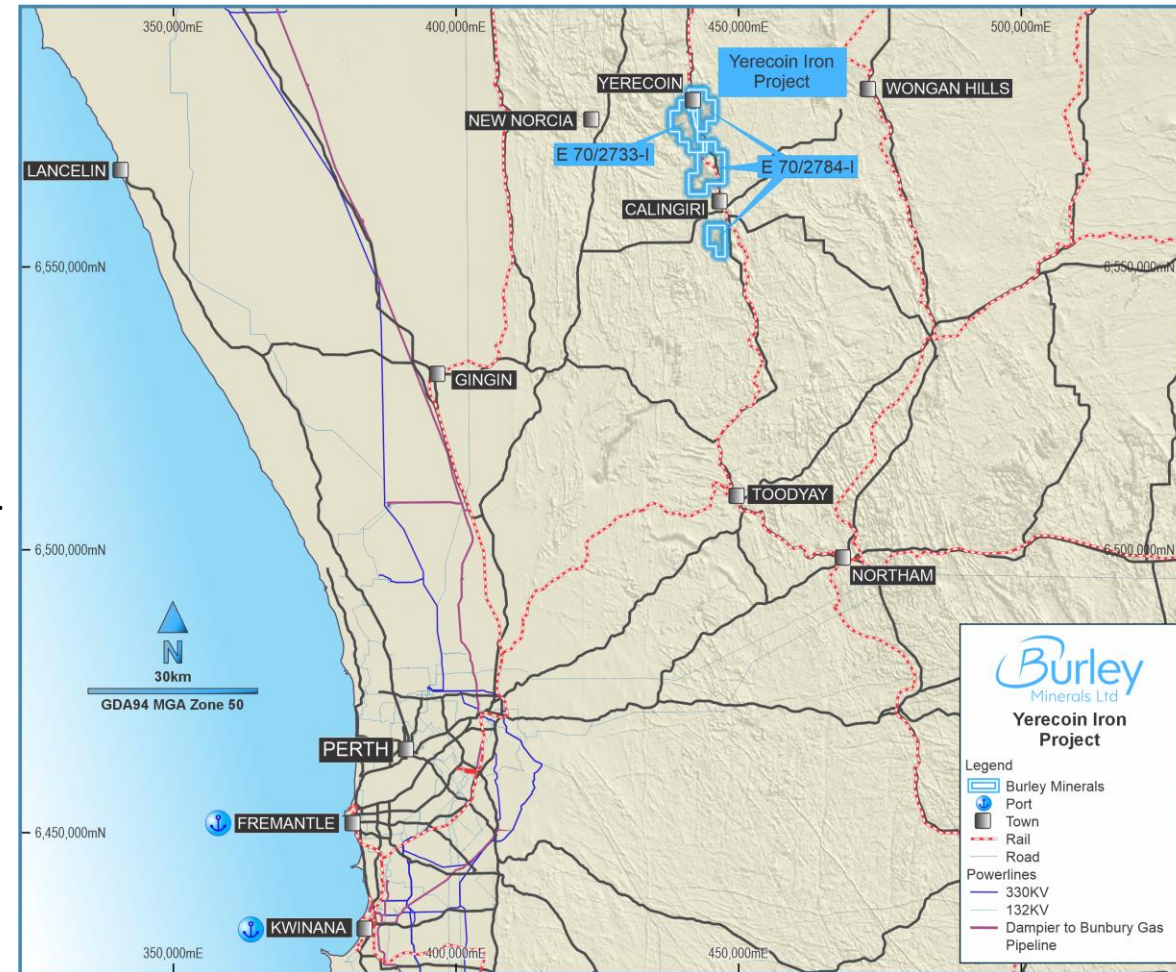
- High Voltage power transmission lines - 132kV and 330kV.
- Dampier – Bunbury Natural Gas Pipeline (DBNGP).

## TRANSPORT

- Tier 2 railway (Toodyay-Miling line) - Connects to Eastern Goldfields Railway network.
- Kwinana Bulk Terminal – 225km by rail or road transport.
- Export port options - Kwinana, Geraldton, Bunbury & Esperance.

## FREEHOLD

- Cleared farming land – signed Land Access & Compensation Agreement on main tenure signed. Progress access to two other farms in Warden's Court.



**Yerecoin Project location and regional infrastructure:  
rail network, export ports, HV power transmission lines, DBNGP**



# Investment Summary: A Portfolio of Assets in Tier 1 Mining Provinces

**Chubb Lithium Project:** In the world-class lithium province of Quebec, Canada

- Within a 20km radius of Canada's only operating lithium mine and concentrator.
- Ongoing targeting and exploration drill results.

**Manitoba, Canada Lithium Projects:** Recently acquired of 5 Lithium Projects ~1,100km

- Share the same greenstone belts as other lithium deposits in an emerging and extremely underexplored lithium region.
- Outcropping pegmatite dykes have been mapped and pegmatite intersections logged in historic drill cores will be assayed.

**Significant inherent value in the Western Australian Iron Projects**

- Iron ore in the world class Hamersley Iron Ore Province with evidence of scale and economic grades for potential development and marketing.
- Yerecoin Iron Project – large resource premium iron concentrate at 68.1% Fe - suitable for Direct Reduction Iron Processing and “Green Steel” production.

**Tight Capital Structure with only 103m Shares.**

**Experienced management team in lithium, iron, exploration and mine development.**



For further information please contact:

**Stewart McCallion**

MANAGING DIRECTOR

**+61 (8) 9322 6283**

**ASX: BUR**



# Appendix 1: Yerecoin Magnetite Iron Resources

Resource Area	Resource Category	Tonnes Mt	DTR %	% Fe In-situ	% Fe Conc	% Al <sub>2</sub> O <sub>3</sub> Conc	% SiO <sub>2</sub> Conc	% P Conc	% S Conc
MAIN <sup>1,3</sup>	Indicated	31.0	37.4	31.4	67.7	0.15	6.01	0.01	0.03
	Inferred	99.8	35.1	29.6	68.4	0.2	5.40	0.01	0.04
	Sub-Total	130.8	35.7	29.7	68.0	0.18	5.95	0.01	0.03
SOUTH <sup>2,3</sup>	Inferred	115.9	28.1	29.8	67.9	0.41	4.20	0.01	0.75
<b>TOTAL</b>	Indicated	31.0	37.4	31.4	67.7	0.15	6.01	0.01	0.03
	Inferred	215.7	31.3	29.7	68.1	0.31	4.75	0.01	0.42
	<b>Total</b>	<b>246.7</b>	<b>32.1</b>	<b>29.9</b>	<b>68.1</b>	<b>0.29</b>	<b>4.91</b>	<b>0.01</b>	<b>0.37</b>

## YERECOA MAIN DEPOSIT PRELIMINARY METALLURGICAL TESTWORK INDICATES:

Coarse Grind Size  
High Concentrate Grade (32% DTR)

P<sub>80</sub> 106µ  
68% Fe

## HIGH VALUE PREMIUM MAGNETITE CONCENTRATE PRODUCT SUITABLE FOR SINTER FEED

1. The Yerecoin Main and South Mineral Resource Estimate was reported in 2014 under the 2012 Edition of the "Australasian Code for Reporting of Exploration Results, Mineral Resources and Ore Reserves". The Mineral Resource Estimate was detailed in refer to Prospectus dated 27 May 2021 Section 10 for the Independent Technical Assessment Report.
2. The Company is not aware of any new information or data that materially affects the information included in the original market announcements and that all material assumptions and technical parameters underpinning the data in the relevant market announcements continue to apply and have not materially change

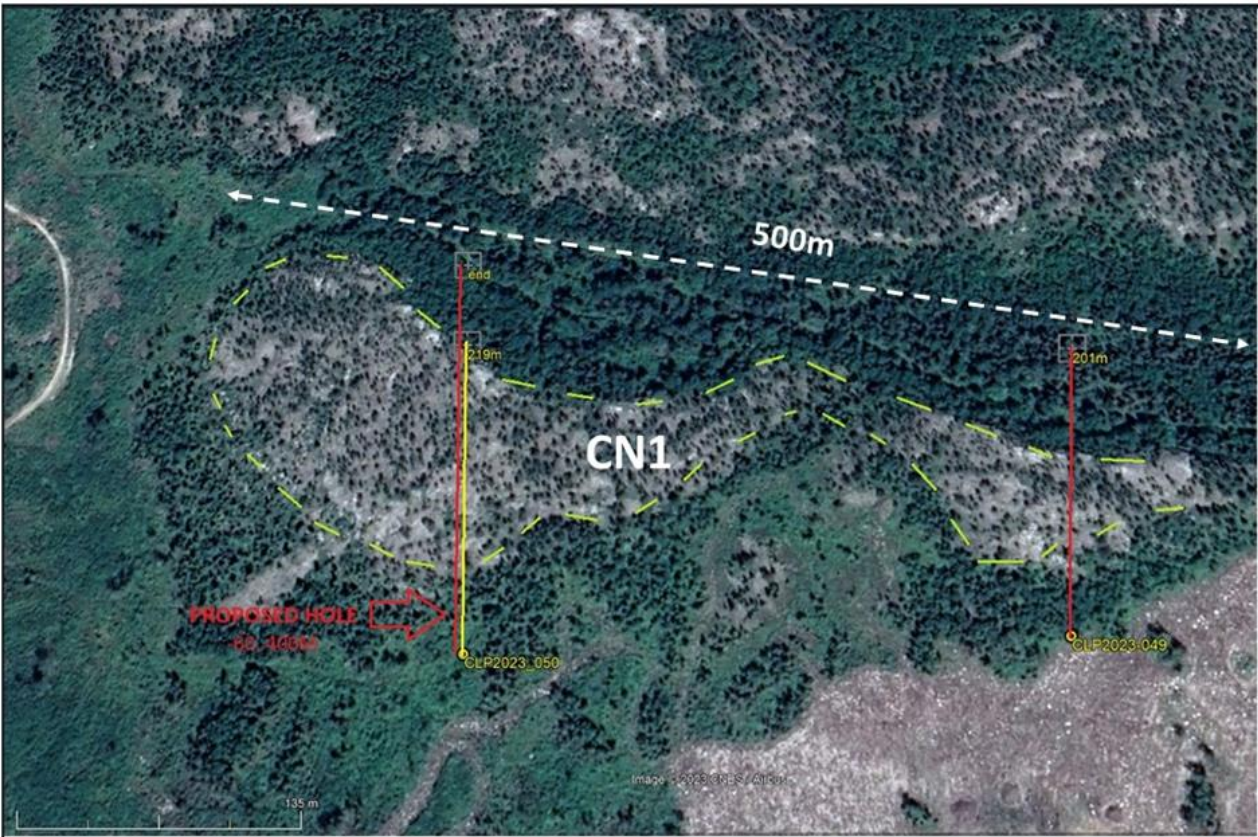
## Appendix 2 – Yerecoin Project: Excellent Location and Infrastructure





# Appendix 3 - Chubb North Extension Pegmatite Prospect

Drilling confirms CN1 pegmatite prospect is a large LCT fertile target



Chubb North CN1 pegmatite with at least 500m strike with location of CLP049 and CLP50 diamond holes that had LCT pegmatite combined intercepts of 138m (69% of hole) and 182m (83% of hole), respectively.



Geologist Paul Nagerl traversing the large CN1pegmatite outcrop

Pegmatite Depth			Pegmate	Pegmatite	Comments
Hole ID	Name	m	Combined width m	% of hole	
CLP047	CN3	120	51.0	42%	Pegmatite intercepts range between 1m and 31m
CLP048	CN3	138	52.8	38%	Pegmatite intercepts range between 0.7m and 37m
CLP049	CN1	201	138.0	69%	Pegmatite intercepts range between 0.6m and 47m
CLP050	CN1	219	182.0	83%	Pegmatite intercepts range between 0.6m and 57m



## Appendix 4 - Chubb North Abundant Pegmatite Outcrops

An overhead view of CN3 pegmatite prospect at Chubb North with drill rig and support vehicles for scale.





# Appendix 5 - Canadian Lithium Exposure with Additional 5 Projects and ~1,100km<sup>2</sup> Tenure in Manitoba

- Acquisition of 5 Lithium Projects (all 100%) in Manitoba, Canada, which share the same greenstone belts as other lithium deposits.
- Tenure provides exposure to Superior Province rocks in Manitoba, an emerging and extremely underexplored lithium region.

**Paull Lake** ~530km<sup>2</sup> land package located ~30km from the Godslith Lithium Deposit of 8.53Mt at 1.21% Li<sub>2</sub>O<sup>1</sup>.

**Oxford Lake** ~92km<sup>2</sup> land package located in the Superior Province of the Canadian Shield, less than 20km from the Oxford House township, and accessible via a road that transects the eastern section of the Project.

**Partridge** ~240km<sup>2</sup> located in north central Manitoba. Proximal infrastructure includes the Missi Falls Hydro-electricity Facility and an airstrip on the property. Historical base metal exploration located numerous pegmatite showings and intersections which were not assayed for lithium.

**Cormorant** ~186km<sup>2</sup> located in central Manitoba 56km from the town of Pas and 110km southeast of the mining city of Flin-Flon. Directly accessible by road, with major railway and hydro-electric power lines intersecting the property.

**White Rabbit** ~70km<sup>2</sup> located in central Manitoba. Covers a 15km strike length of prospective greenstone belt and is located approximately 50km north of the Cross Lake/Jenpeg lithium showing. Pegmatite outcrops that are up to 2.5km long and 600m wide have been mapped.

1. Refer to Vision Lithium's TSXV Release dated 16 February 2021.
2. Refer to Native Mineral Resources' ASX Release dated 17 August 2023 and 9 October 2023.

