

1 December 2014

DRILLING AT SEFAATLI RETURNS FURTHER HIGH GRADE URANIUM RESULTS

All Drill holes at Deliler and Tulu Tepe Intersect Mineralisation

Highlights:

- At the Tulu Tepe Prospect drilling on the west and east sides discovered new uranium mineralisation with two holes returning:

2.5m @ 2,150ppm eU₃O₈ from 81.7m including 1.2m @ 3,980ppm eU₃O₈ (SD60)
4.3m @ 930ppm eU₃O₈ from 80.3m including 0.5m @ 2,240ppm eU₃O₈ (SD69)

- At the Deliler Prospect recent drilling in the vicinity of the recently identified cross-cutting fault returned further high grade uranium results, including:

1.8m @ 940ppm eU₃O₈ from 75.4m including 0.6m @ 1,940ppm eU₃O₈ (SD62)
1.3m @ 580ppm eU₃O₈ from 51.9m including 0.5m @ 1,520ppm eU₃O₈ (SD67)

Anatolia Energy Limited (**Company** or **Anatolia**) is pleased to announce that since its last ASX announcement dated 11 November 2014, it has completed an additional 21 drill holes (rotary and HQ diamond core) for 2,490m of drill advance at its Deliler and Tulu Tepe prospects within the Sefaati Uranium Project, with all holes again intersecting uranium mineralisation, and intersecting further high-grade uranium in the vicinity of the newly identified cross-cutting fault at the Deliler Prospect.

Additional drilling at Deliler (11 holes for 1,223m of advance) focussed mainly on the E-W cross-cutting fault (Figure 1, Table 2)) where uplifting of the uranium bearing sequence juxtaposes surface limestone to the south and sandstone to the north. The fault zone marks a very clear break in and to the prospect stratigraphy and is believed to play an important role in the formation of the uranium mineralisation at the Deliler prospect. All drill holes intersected two or more lenses (Table 1), and one hole up to 4 stacked lenses, with better intercepts returning:

1.8m @ 940ppm eU₃O₈ from 75.4m including 0.6m @ 1,940ppm eU₃O₈ (SD62)
1.3m @ 580ppm eU₃O₈ from 51.9m including 0.5m @ 1,520ppm eU₃O₈ (SD67)

A limited drilling program was completed at the Company's Tulu Tepe prospect before the program was suspended due to poor weather. All Tulu Tepe drill holes intersected two or more lenses (Table 1, Figure 3), and one hole up to 4 stacked lenses, with a distinct zone of uranium enrichment occurring around 80m beneath ground surface (**bgs**) which returned better intercepts of:

1.4m @ 540ppm eU₃O₈ from 82.4m including 0.6m @ 1,270ppm eU₃O₈ (SD56)
2.5m @ 2,150ppm eU₃O₈ from 81.7m including 1.2m @ 3,980ppm eU₃O₈ (SD67)
4.3m @ 930ppm eU₃O₈ from 80.5m including 0.5m @ 2,240ppm eU₃O₈ (SD69)

Wide spaced drilling was confined to the west and east sides of the prospect (Figure 2). Drilling intersected a thick sequence of sandstones lying between a thin surface limestone and either a granite or volcanic basement at or around 108m bgs. Drilling intersected a number of reduction-oxidation (**redox**) zones which are essential for the formation of the uranium mineralisation, whilst surface mapping to the immediate south of the prospect clearly identifies the upper redox boundary at or about 20m bgs in a cliff exposure (Figure 2, image). This upper boundary is characterised by strong gamma radioactivity over several vertical metres with scintillometer readings returning some of the best surface values for the Temrezli area.

Due to the on-set of inclement winter snows the drill program has been temporarily suspended. Phase 1 results will now be assessed in more detail to plan a follow on Phase 2 program, likely to commence in Q1 2015.

The Company's Interim CEO & MD, Mr Paul Cronin said:

"These recent results indicate strong uranium mineralisation within the Sefaatli Project exceeding our expectations. It is increasingly likely that Sefaatli may be capable of being developed as a satellite operation to feed into our advanced Temrezli ISR Uranium Project."

The discovery of the fault zone within the Deliler prospect and the new uranium mineralisation at Tulu Tepe are very encouraging and gives us all necessary confidence to plan the Phase 2 drilling likely to commence in Q1 2015."

ENDS

For further Company information please contact:

Paul Cronin

Interim CEO & Managing Director
Anatolia Energy Limited

Tel: +44 7912 351031 (UK)

Tel: +61 428 638 291 (Aust)

Competent person Statement

Information in this document that relates to exploration results is based on information compiled by Robert Annett, a Director of Anatolia Energy Ltd, and Dr B Schmeling an independent geophysical consultant. Mr Annett is a Member of the Australasian Institute of Mining and Metallurgy and Dr Schmeling is a member of a Recognised Overseas Professional Organisations (ROPOs) as listed by the ASX, and both have sufficient experience which is relevant to the style of mineralisation and type of deposit under consideration and to the activity which he is undertaking to qualify as a Competent Person as defined by the 2012 edition of the "Australasian Code for Reporting of Exploration Results, Mineral Resources and Ore Reserves". Mr Annett and Dr Schmeling consent to the inclusion in the document of the information in the form and context in which it appears.

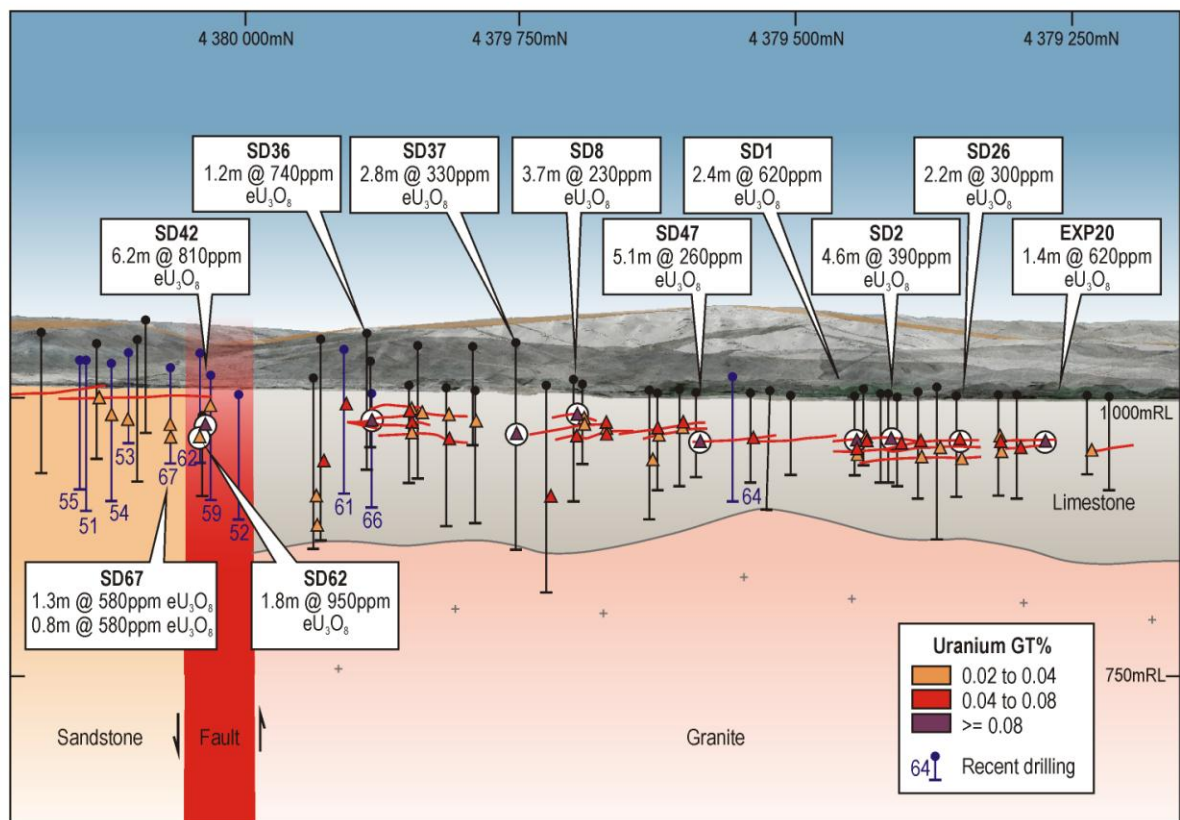
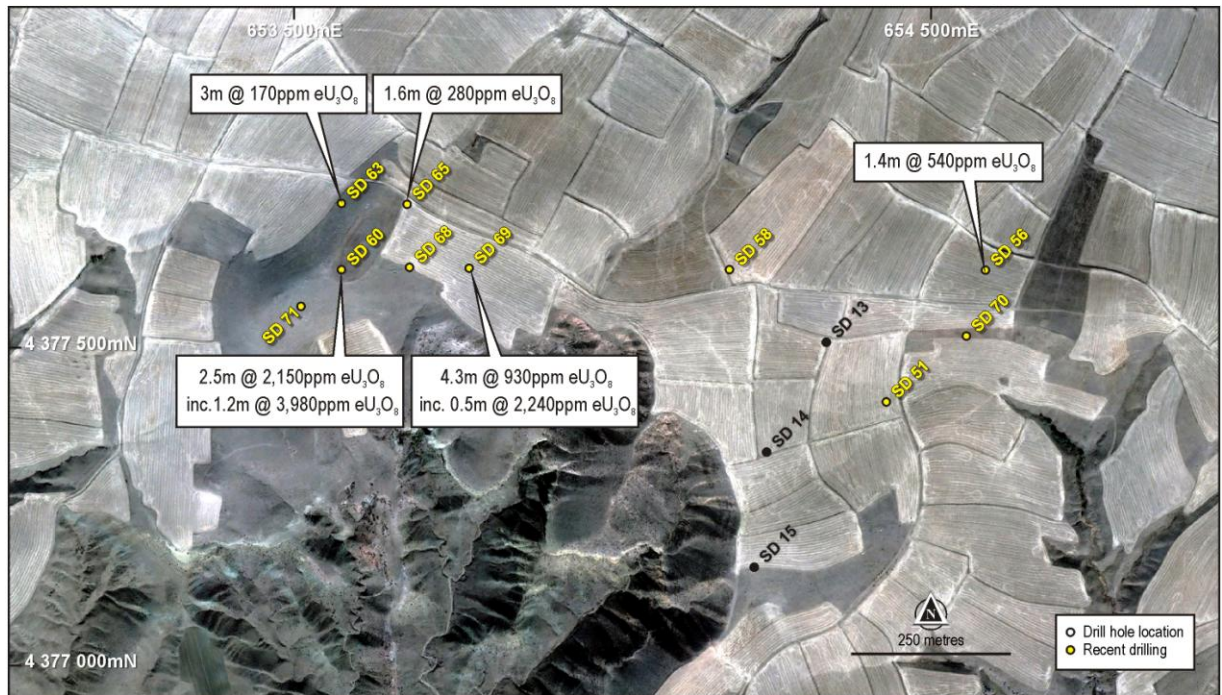


Figure 1: Deliler; Interpretation of fault zone, and location of recent drilling



Tulu Tepe Collar Results



Tulu Tepe South Prospect Drilling Area with Scintillometer Reading (CPS)

Figure 2. Tulu Tepe: Drill Hole Location and Surface Scintillometer Traverses

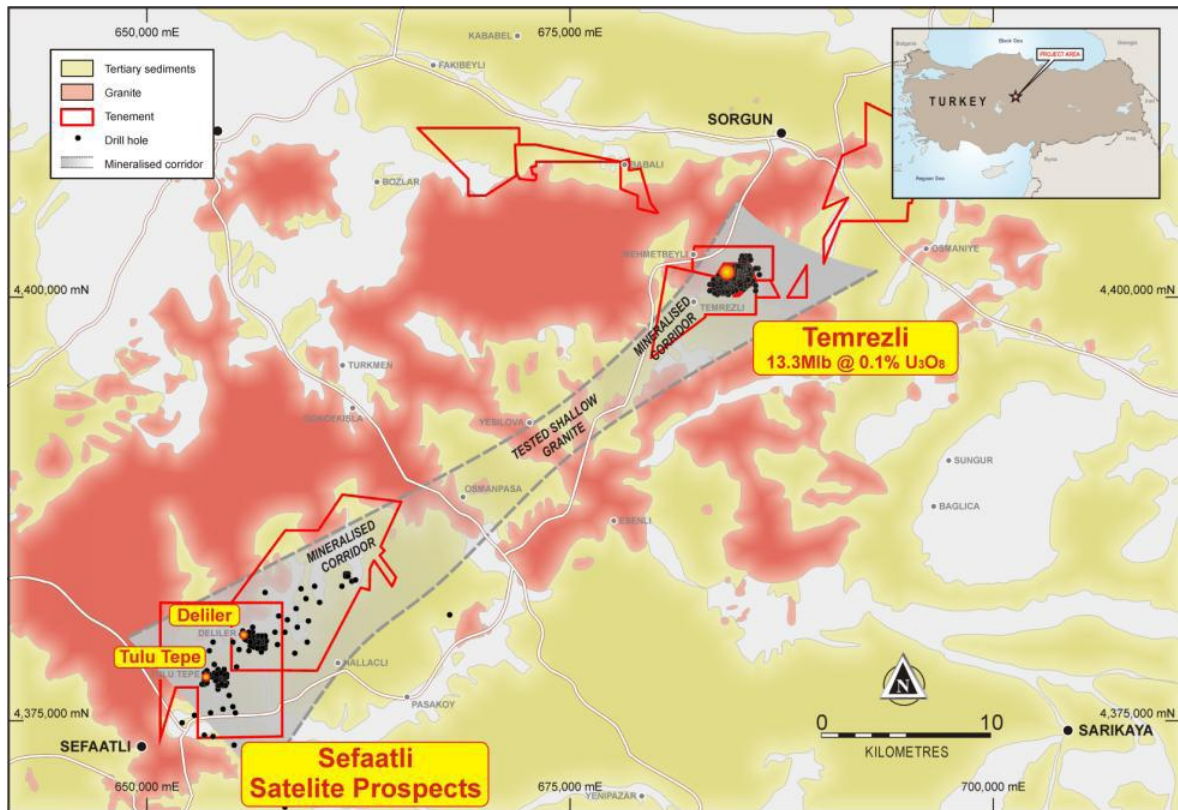


Figure 3: Sefaatlí Project location in relation to the Temrezli Project

Table 1. Summary of eU_3O_8 Estimates for Current Drilling Program at Deliler ($>0.01\% eU_3O_8$)

Hole	Zone	Top (m)	Bottom (m)	Thickness (m)	Cut- off (cps)	eG (% eU_3O_8)	eGT (% eU_3O_8)	All zones		
								sum.T	av. eG	sum.GT
SD51	1	75.00	75.60	0.60	500	0.015	0.009	3.40	0.016	0.056
	2	77.60	78.60	1.00	500	0.027	0.027			
	3	81.70	82.10	0.40	400	0.010	0.004			
	4	89.10	90.50	1.40	400	0.011	0.016			
SD52	1	44.00	44.60	0.60	500	0.014	0.008	1.70	0.013	0.022
	2	72.80	73.10	0.30	500	0.011	0.003			
	3	77.40	77.80	0.40	500	0.013	0.005			
	4	90.00	90.40	0.40	400	0.015	0.006			
SD53	1	59.80	61.10	1.30	600	0.029	0.038	2.20	0.022	0.049
	2	62.00	62.90	0.90	400	0.012	0.011			
SD54	1	47.20	48.40	1.20	500	0.016	0.019	3.50	0.010	0.035
	2	66.20	68.20	2.00	300	0.007	0.014			
	3	72.70	73.00	0.30	300	0.007	0.002			
SD55	1	25.60	27.10	1.50	500	0.018	0.027	1.90	0.016	0.031
	2	28.10	28.50	0.40	400	0.010	0.004			

Hole	Zone	Top	Bottom	Thickness	Cut-off	eG	eGT	All zones		
SD56	1	78.00	79.30	1.30	600	0.009	0.011	2.70	0.029	0.078
	2	82.40	83.80	1.40	600	0.054	0.076			
	including	82.80	83.40	0.60		0.127				
SD57	1	27.60	28.00	0.40	400	0.009	0.004	4.00	0.012	0.046
	2	44.90	46.50	1.60	400	0.014	0.023			
	3	53.00	55.00	2.00	400	0.010	0.019			
SD58	1	118.10	118.40	0.30	400	0.009	0.003	2.10	0.011	0.023
	2	119.30	119.70	0.40	400	0.010	0.004			
	3	124.10	125.50	1.40	400	0.012	0.016			
SD59	1	31.30	31.90	0.60	800	0.039	0.023	2.50	0.024	0.061
	2	39.80	40.50	0.70	600	0.018	0.012			
	3	51.80	52.60	0.80	600	0.025	0.020			
	4	63.60	64.00	0.40	450	0.014	0.006			
SD60	1	81.70	84.20	2.50	800	0.215	0.538	2.50	0.215	0.538
	including	82.70	83.90	1.20	10,000	0.398	0.477			
SD61	1	72.20	72.70	0.50	400	0.011	0.005	4.20	0.009	0.038
	2	118.30	122.00	3.70	350	0.009	0.033			
SD62	1	75.40	77.20	1.80	800	0.094	0.169	1.80	0.094	0.169
	including	75.80	76.40	0.60	5,000	0.194	0.116			
SD63	1	67.30	70.30	3.00	600	0.017	0.051	3.00	0.017	0.051
SD64	1	73.60	74.30	0.70	400	0.014	0.010	0.70	0.014	0.010
SD65	1	97.20	98.20	1.00	500	0.021	0.021	2.60	0.025	0.066
	2	99.20	100.80	1.60	600	0.028	0.045			
SD66	1	35.80	36.20	0.40	400	0.010	0.004	5.10	0.015	0.074
	2	48.30	50.20	1.90	400	0.020	0.038			
	3	53.60	54.80	1.20	400	0.011	0.013			
	4	55.50	57.10	1.60	400	0.012	0.019			
SD67	1	51.90	53.20	1.30	800	0.058	0.076	2.10	0.052	0.110
	including	52.20	52.70	0.50	3,000	0.152				
	2	62.00	62.80	0.80	800	0.043	0.034			
	including	62.10	62.60	0.50	1,500	0.068				
SD68	1	75.50	76.70	1.20	400	0.010	0.012	1.80	0.012	0.022
	2	78.90	79.50	0.60	400	0.016	0.010			

Hole	Zone	Top	Bottom	Thickness	Cut-off	eG	eGT	All zones		
SD69	1	80.30	84.60	4.30	800	0.093	0.398	5.10	0.082	0.417
	including	81.00	81.50	0.50	6,000	0.224				
	including	82.30	84.30	2.00	3,000	0.106				
	2	93.00	93.80	0.80	600	0.024	0.019			
SD70	1	83.60	85.40	1.80	500	0.019	0.034	1.80	0.019	0.034
SD71	1	64.70	65.40	0.70	400	0.014	0.010	2.70	0.011	0.029
	2	78.30	78.90	0.60	400	0.011	0.007			
	3	82.70	83.30	0.60	300	0.008	0.005			
	4	104.80	105.60	0.80	300	0.009	0.007			

Table 2. Drill Hole Locations (ED50 Zone 36 6deg) – All Holes Vertical

Hole ID	East	North	Elevation	Final Depth	Hole Type
SD51	654432	4377415	1078	221.0	DD
SD52	657024	4380070	987	115.7	DD
SD53	656377	4380088	1041	80.3	DD
SD54	656432	4380111	1030	125.3	DD
SD55	656683	4380172	1026	116.3	DD
SD56	654587	4377622	1086	87.6	DD
SD57	656634	4380160	1025	135.3	DD
SD58	654184	4377624	1110	134.3	RC
SD59	656508	4380030	1020	116.3	DD
SD60	653574	4377624	1132	164.3	DD
SD61	656403	4379895	1044	130.3	RC
SD62	656350	4380020	1042	100.3	RC
SD63	653575	4377727	1131	100.3	RC
SD64	656300	4379525	1024	109.9	DD
SD65	653677	4377726	1136	119.2	RC
SD66	656682	4379904	1000	104.3	RC
SD67	656391	4380052	1029	89.3	DD
SD68	653682	4377627	1125	110.0	RC
SD69	653775	4377623	1123	112.3	RC
SD70	654558	4377520	1077	100.0	RC
SD71	653517	4377565	1126	118.3	RC

Section 1 Sampling Techniques and Data

(Criteria in this section apply to all succeeding sections.)

Criteria	JORC Code explanation	Commentary
Sampling techniques	<ul style="list-style-type: none"> Nature and quality of sampling (eg cut channels, random chips, or specific specialised industry standard measurement tools appropriate to the minerals under investigation, such as down hole gamma sondes, or handheld XRF instruments, etc). These examples should not be taken as limiting the broad meaning of sampling. 	<p>Sampling for the estimation of equivalent uranium grades uses a down-hole electrical and gamma logging unit consisting of a 5MXA-1000-220 Matrix Logging Console in combination with a 4MXA winch assembly manufactured by Mount Sopris, Golden, Colorado, USA. The logging unit is equipped with one fully calibrated Poly Gamma Probe, type 2PGA-1000 that can record in one run either the gamma ray intensity (gamma) in cps, or in another run simultaneously the electrical self potential field (SP) and the so-called single point electrical resistance (SPR).</p> <p>Sampling for the estimation of chemical uranium grades was by ALS, Turkey by code ME-MS62RT for Th, U by ICP-MS methodology.</p>
	<ul style="list-style-type: none"> Include reference to measures taken to ensure sample representivity and the appropriate calibration of any measurement tools or systems used. 	<p>At the Temrezli site, bore hole TUR1 was constructed as a calibration hole and at regular intervals particularly during drilling and gamma-electric logging programs, TUR1 is logged in order to determine whether any instrument drift as a result of poor handling, crystal deterioration, etc., has occurred. To date, TUR1 has been logged twenty-seven (27) times and no instrument drift has been detected.</p> <p>All assays for chemical analyses contain field duplicates, known uranium standards and blank material in order to determine the representivity of the ALS results.</p>
	<ul style="list-style-type: none"> Aspects of the determination of mineralisation that are Material to the Public Report. In cases where 'industry standard' work has been done this would be relatively simple (eg 'reverse circulation drilling was used to obtain 1 m samples from which 3 kg was pulverised to produce a 30 g charge for fire assay'). In other cases more explanation may be required, such as where there is coarse gold that has inherent sampling problems. Unusual commodities or mineralisation types (eg submarine nodules) may warrant disclosure of detailed information. 	<p>The recorded logging data is controlled by a laptop computer by use of a specifically tailored software, WellCad. For each hole the stored data consists of two LAS-files (Log ASCII Standard), one for the Gamma recording, one for the SP/SPR recording, and two RD- (Raw Data) or TFD- (Tagged Field Data) files, depending on the program set-up. Data is recorded in 10cm intervals from surface to the end of the hole. The data files are forwarded to, Dr Bernie Schmeling, a geophysicist of over 40 years experience mostly with Uranerz GmbH Germany, one of the world's pre-eminent uranium companies, for further treatment and/or data evaluation and for the estimation of equivalent uranium grades (eU_3O_8). Dr Schmeling's estimated uranium grades are based on the form and intensity of the gamma response measured in the course of logging each anomaly.</p> <p>Quarter sized HQ drill core was collected for various intervals for chemical analysis.</p>
Drilling techniques	<ul style="list-style-type: none"> Drill type (eg core, reverse circulation, open-hole hammer, rotary air blast, auger, Bangka, sonic, etc) and details (eg core diameter, triple or standard tube, depth of diamond tails, face-sampling bit or other type, whether core is oriented and if so, by what method, etc). 	<p>Drilling is either mud rotary from surface, HQ core drilling from surface, or mud rotary with HQ core drilling through the mineralised zone. All holes are drilled vertically from surface and a selected number surveyed down hole using a FlexIT survey tool. Downhole deviation over 150m rarely exceeds 1-2 degrees from vertical. Average depth of drilling is approximately 100m.</p>
Drill sample recovery	<ul style="list-style-type: none"> Method of recording and assessing core and chip sample recoveries and results assessed. 	<p>Diamond core recovery is measured and recorded in the database. No significant core loss issue exists and most sampled intervals record better than 90% core recovery.</p>
	<ul style="list-style-type: none"> Measures taken to maximise sample recovery and ensure representative nature of the samples. 	<p>The drilling contract stipulates that the hole must be re-drilled if core recovery falls below 90%. For the most part full core recovery is obtained.</p>
	<ul style="list-style-type: none"> Whether a relationship exists between sample recovery and grade and whether sample bias may have occurred due to preferential loss/gain of fine/coarse material. 	<p>None – equivalent uranium grade is estimated from gamma logging whilst chemical uranium grade is estimated from quarter core.</p>
Logging	<ul style="list-style-type: none"> Whether core and chip samples have been geologically and geotechnically logged to a level of detail to support appropriate Mineral Resource estimation, mining studies and metallurgical studies. 	<p>Geological logging to a resolution of 5cm is undertaken with a record kept of redox, colour, lithology, weathering, grain size, mineralisation, etc. Diamond core is stored at the Company's core farm adjacent to the deposit.</p>
	<ul style="list-style-type: none"> Whether logging is qualitative or quantitative in nature. Core (or costean, channel, etc) photography. 	<p>Diamond core is photographed.</p>
	<ul style="list-style-type: none"> The total length and percentage of the relevant intersections logged. 	<p>All drill holes are geophysically logged in full.</p>

Sub-sampling techniques and sample preparation	<ul style="list-style-type: none"> If core, whether cut or sawn and whether quarter, half or all core taken. 	For the purposes of collecting selected core material for chemical assay or metallurgical sample the diamond core is either machine sawn, pressure split or cut in half depending upon cementation of the material. On occasion quarter core is hand cut and collected for additional assay.
	<ul style="list-style-type: none"> If non-core, whether riffled, tube sampled, rotary split, etc and whether sampled wet or dry. 	Not applicable - mud rotary sections not sampled, entire hole geophysically logged
	<ul style="list-style-type: none"> For all sample types, the nature, quality and appropriateness of the sample preparation technique. 	The use of either machine diamond saw, pressure blade or hand cutting using a spatula to effect the sampling of hard, soft or friable core material is appropriate.
	<ul style="list-style-type: none"> Quality control procedures adopted for all sub-sampling stages to maximise representivity of samples. 	Field QAQC procedures include the insertion of blanks and commercial uranium standards for diamond core sampling. Standards and blanks are inserted at a rate of approximately 1 in every 20 samples. Samples are regularly sent to umpire laboratories for assaying. All QA/QC and umpire laboratory samples have returned satisfactory results. QA for the wireline logging is discussed elsewhere in this table.
	<ul style="list-style-type: none"> Measures taken to ensure that the sampling is representative of the in situ material collected, including for instance results for field duplicate/second-half sampling. 	Quarter core sampling of core ensures that the sampling is representative of the in situ material (core) collected.
	<ul style="list-style-type: none"> Whether sample sizes are appropriate to the grain size of the material being sampled. 	Sample sizes collected are considered to be appropriate to reasonably represent the material being tested.
Quality of assay data and laboratory tests	<ul style="list-style-type: none"> The nature, quality and appropriateness of the assaying and laboratory procedures used and whether the technique is considered partial or total. 	The wet chemical analysis for uranium and thorium, consists of a strong mineral acid digest of the pulped core followed by an analysis of the extraction fluid using ICP-MS. These methods generally require between 1 - 200g of sample material and are considered to provide a total analysis for the element of choice.
	<ul style="list-style-type: none"> For geophysical tools, spectrometers, handheld XRF instruments, etc, the parameters used in determining the analysis including instrument make and model, reading times, calibrations factors applied and their derivation, etc. 	Instrument calibration is undertaken at regular intervals during the logging program by running the logging unit in the calibration hole, TUR1. Calibration factors and correction factors that are applied to the gamma (cps) data are either as supplied by the manufacturers (calibration factor) or as a consequence of the construct of the hole which is being logged (dry/wet, hole diameter, thickness of metal in hole (casing/rods). The Company has selected samples from core material for uranium and thorium in order to commence the understanding of the radioactive (dis)equilibrium factor (REF) within the uranium decay chain.
	<ul style="list-style-type: none"> Nature of quality control procedures adopted (eg standards, blanks, duplicates, external laboratory checks) and whether acceptable levels of accuracy (ie lack of bias) and precision have been established 	Field QAQC procedures included the insertion of blanks, field duplicates and commercial standards. Acceptable levels of accuracy and precision have been established.
Verification of sampling and assaying	<ul style="list-style-type: none"> The verification of significant intersections by either independent or alternative company personnel. 	Logging data files are forwarded to, Dr Bernie Schmeling a specialist providing services to the uranium industry.
	<ul style="list-style-type: none"> The use of twinned holes. 	There has been no twinned holes to date
	<ul style="list-style-type: none"> Documentation of primary data, data entry procedures, data verification, data storage (physical and electronic) protocols. 	Field data is uploaded at point of collection into Micromine software and verified at point of entry. Data is stored in Turkey and Perth where it is continuously backed-up.
	<ul style="list-style-type: none"> Discuss any adjustment to assay data. 	No adjustments have been made to the assay data.
Location of data points	<ul style="list-style-type: none"> Accuracy and quality of surveys used to locate drill holes (collar and down-hole surveys), trenches, mine workings and other locations used in Mineral Resource estimation. 	Drill hole collars were surveyed by DGPS to a horizontal and vertical accuracy of better than 1cm. Selected drill holes were surveyed using FlexIT and found to have little to no deviation from the vertical.
	<ul style="list-style-type: none"> Specification of the grid system used. 	The grid system is UTM ED50 Zone 36 (6 degree).
	<ul style="list-style-type: none"> Quality and adequacy of topographic control. 	The topographic surface of the deposit and for an area of approximately 10x10km has been generated from satellite imagery by Geoimage to an accuracy of approximately 1m. Topographic contours have been generated at a spacing of 2m.

<i>Data spacing and distribution</i>	<ul style="list-style-type: none"> • <i>Data spacing for reporting of Exploration Results.</i> 	The Company's drill hole density at the Tuglu Tepe and Deliler prospects is currently greater than 100x100m.
	<ul style="list-style-type: none"> • <i>Whether the data spacing and distribution is sufficient to establish the degree of geological and grade continuity appropriate for the Mineral Resource and Ore Reserve estimation procedure(s) and classifications applied.</i> 	The data spacing and distribution is not sufficient to demonstrate spatial and grade continuity of the mineralised horizons.
	<ul style="list-style-type: none"> • <i>Whether sample compositing has been applied.</i> 	Sample compositing has not occurred.
<i>Orientation of data in relation to geological structure</i>	<ul style="list-style-type: none"> • <i>Whether the orientation of sampling achieves unbiased sampling of possible structures and the extent to which this is known, considering the deposit type.</i> 	Sampling, whether chemical or equivalent, is in a vertical plane and is perpendicular to the generally flat lying "strata-bound" mineralised horizons, thereby minimising any possible sampling bias.
	<ul style="list-style-type: none"> • <i>If the relationship between the drilling orientation and the orientation of key mineralised structures is considered to have introduced a sampling bias, this should be assessed and reported if material.</i> 	Diamond drilling confirmed that drilling orientation did not introduce any bias regarding the orientation of the mineralised horizons.
<i>Sample security</i>	<ul style="list-style-type: none"> • <i>The measures taken to ensure sample security.</i> 	Chain of Custody of digital data is managed by the Company. Physical material is stored on site and, when necessary, delivered to the assay laboratory in Izmir, Turkey by independent transporter. Thereafter laboratory samples are controlled by the nominated laboratory which to date has been ALS. The ALS laboratory at Izmir has been visited by CSA Global as part of their QA/QC review and found to be to industry standard. All sample collection is controlled by digital sample control files and hard-copy ticket books.
<i>Audits or reviews</i>	<ul style="list-style-type: none"> • <i>The results of any audits or reviews of sampling techniques and data.</i> 	There has been no audit or review of sampling techniques and data.

Section 2 Reporting of Exploration Results

(Criteria listed in the preceding section also apply to this section.)

Criteria	JORC Code explanation	Commentary
Mineral tenement and land tenure status	<ul style="list-style-type: none"> Type, reference name/number, location and ownership including agreements or material issues with third parties such as joint ventures, partnerships, overriding royalties, native title interests, historical sites, wilderness or national park and environmental settings 	The Deliler and Tuglu Tepe prospects are located within the Company's 100% owned Exploration Licences 2008-10035 and 2011-00582, located 5km east of Sefaatlil, central Turkey. The ELs have up to a "2% royalty at the pit head" payable to the Government.
	<ul style="list-style-type: none"> The security of the tenure held at the time of reporting along with any known impediments to obtaining a licence to operate in the area. 	The Exploration Licences are in good standing with no known impediment to the future grant of an Operation Permit. An OL is currently pending for EL2008-10035 whilst EL2011-00582 is valid to May 2015.
Exploration done by other parties	<ul style="list-style-type: none"> Acknowledgment and appraisal of exploration by other parties. 	The MTA commenced exploration for uranium in the Yozgat – Sorgun area in the early 1980s and over a period of five years discovered uranium mineralisation near the villages of Temrezli and Sefaatlil. The MTA's geotechnical studies and evaluations, including the drilling of over 74,000m of drilling at 507 sites and metallurgical test work, continued until 1989. In the past 4 years the Company has re-appraised a substantial amount of this work, including the drilling of a number of "diamond twin" holes, and concluded that their work was completed by competent geoscientists using the best estimation tools available at the time.
Geology	<ul style="list-style-type: none"> Deposit type, geological setting and style of mineralisation. 	The site area comprises granitic basement rocks overlain by younger Tertiary-aged sediments. Exploration is targeting secondary uranium mineralisation within Tertiary age clastic sediments. These sandstone uranium deposits are a redox controlled epigenetic concentration of uranium minerals typically hosted by fine- to coarse-grained sediments deposited in fluvial, alluvial, lacustrine or marginal marine environments.
Drill hole Information	<ul style="list-style-type: none"> A summary of all information material to the understanding of the exploration results including a tabulation of the following information for all Material drill holes: 	Drill hole information has been provided in this ASX announcements as Table 1 and 2.
	<ul style="list-style-type: none"> ◦ easting and northing of the drill hole collar 	
	<ul style="list-style-type: none"> ◦ elevation or RL (Reduced Level – elevation above sea level in metres) of the drill hole collar 	
	<ul style="list-style-type: none"> ◦ dip and azimuth of the hole 	
	<ul style="list-style-type: none"> ◦ down hole length and interception depth 	
	<ul style="list-style-type: none"> ◦ hole length. 	
	<ul style="list-style-type: none"> If the exclusion of this information is justified on the basis that the information is not Material and this exclusion does not detract from the understanding of the report, the Competent Person should clearly explain why this is the case. 	

Data aggregation methods	<ul style="list-style-type: none"> In reporting Exploration Results, weighting averaging techniques, maximum and/or minimum grade truncations (e.g. cutting of high grades) and cut-off grades are usually Material and should be stated. 	The exploration results are equivalent U ₃ O ₈ grades estimated from the empirical observation of the gamma response at down hole intervals of 10 cm. Grade estimation and width is typically estimated using a cut-off count rate of 800 cps, which approximates to 0.001% eU ₃ O ₈ . However, due to different shapes and character of the recorded anomalous intersections a lower cut-off count rate (circa 600 cps or very seldom lower) is applied. In cases where the probe response shows obvious "under saturation", usually caused by very small needle or small peak type anomalies, the half width of the anomaly determines the interval thickness although the count rate used is the total count rate above the 800 cps cut-off. A description of the methodology is provided in "Campbell, M., et al., 2008, <i>The Nature and Extent of Uranium Reserves and Resources and their Environmental Development in the U.S. and Overseas</i> . A Report by the Uranium Committee of the Energy Minerals Division, AAPG. A brief description of the gamma response is included in a Table accompanying this Public Release.
	<ul style="list-style-type: none"> Where aggregate intercepts incorporate short lengths of high grade results and longer lengths of low grade results, the procedure used for such aggregation should be stated and some typical examples of such aggregations should be shown in detail. 	On occasion the estimated grade of a single or double peak gamma anomaly lying within a broader gamma response can be isolated and reported as short lengths of high grade. The methodology for these shorter intervals is as described above.
	<ul style="list-style-type: none"> The assumptions used for any reporting of metal equivalent values should be clearly stated 	No metal equivalents used.
Relationship between mineralisation widths and intercept lengths	<ul style="list-style-type: none"> These relationships are particularly important in the reporting of Exploration Results. 	Down hole length is true width.
	<ul style="list-style-type: none"> If the geometry of the mineralisation with respect to the drill hole angle is known, its nature should be reported. 	All drilling is vertical. The uranium mineralisation is strata bound and essentially flat lying or very shallowly dipping. Down hole drill intercepts are essentially true thickness.
	<ul style="list-style-type: none"> If it is not known and only the down hole lengths are reported, there should be a clear statement to this effect (e.g. 'down hole length, true width not known'). 	Down hole length is true width.
Diagrams	<ul style="list-style-type: none"> Appropriate maps and sections (with scales) and tabulations of intercepts should be included for any significant discovery being reported. These should include, but not be limited to a plan view of drill hole collar locations and appropriate sectional views. 	Appropriate maps of the drilling are included in this and prior ASX release.
Balanced reporting	<ul style="list-style-type: none"> Where comprehensive reporting of all Exploration Results is not practicable, representative reporting of both low and high grades and/or widths should be practiced to avoid misleading reporting of Exploration Results. 	All exploration results for the current drilling program are provided in Table 1.
Other substantive exploration data	<ul style="list-style-type: none"> Other exploration data, if meaningful and material, should be reported including (but not limited to): geological observations; geophysical survey results; geochemical survey results; bulk samples – size and method of treatment; metallurgical test results; bulk density, groundwater, geotechnical and rock characteristics; potential deleterious or contaminating substances. 	There is no other substantive exploration data. The Deliler and Tuglu Tepe prospects are at an early exploration phase.
Further work	<ul style="list-style-type: none"> The nature and scale of planned further work (e.g. tests for lateral extensions or depth extensions or large-scale step-out drilling). 	The nature and scale of the planned work is provided in this and prior ASX announcements.
	<ul style="list-style-type: none"> Diagrams clearly highlighting the areas of possible extensions, including the main geological interpretations and future drilling areas, provided this information is not commercially sensitive. 	Diagrams highlighting areas of possible extensions have been provided in this and prior ASX announcements that were released at the time exploration results became available.