



Drilling programme to commence on high priority gold targets

Redcliffe Resources has commenced RC drilling on high priority gold targets at the Nambi South Prospect within the Redcliffe Gold Project. The current field programme will also include preparatory work for RC drill holes at the Kelly Deposit which are to target depth extensions of near surface high grade mineralisation.

Nambi South Prospect

Exploration at the Nambi South Prospect had been deferred while the Company addressed heritage site clearance requirements in an area surrounding a small historic shallow open pit. Clearance for access to targets that had been generated by work in 2007 and to follow up on limited historic drill activity has been obtained. While waiting to obtain site clearance the Company's focus shifted to the Golden Terrace South and Kelly Prospects which each delivered significant gold intercepts and have been progressed to resource estimation.

The Nambi South Prospect programme will focus on a target generated by an historic drill intercept (RERC127) adjacent to the Nambi South (test) Pit of **30m @ 4.86g/t gold** (refer Figure 1). In 2007 the Company undertook channel sampling within the pit. Twenty two samples taken from the walls at the bottom of the pit averaged 5.03 g/t gold. These included weighted averages of **7m @ 8.64 g/t gold**, **8m @ 3.61 g/t gold**, and **5.5m @ 8.54 g/t gold**.

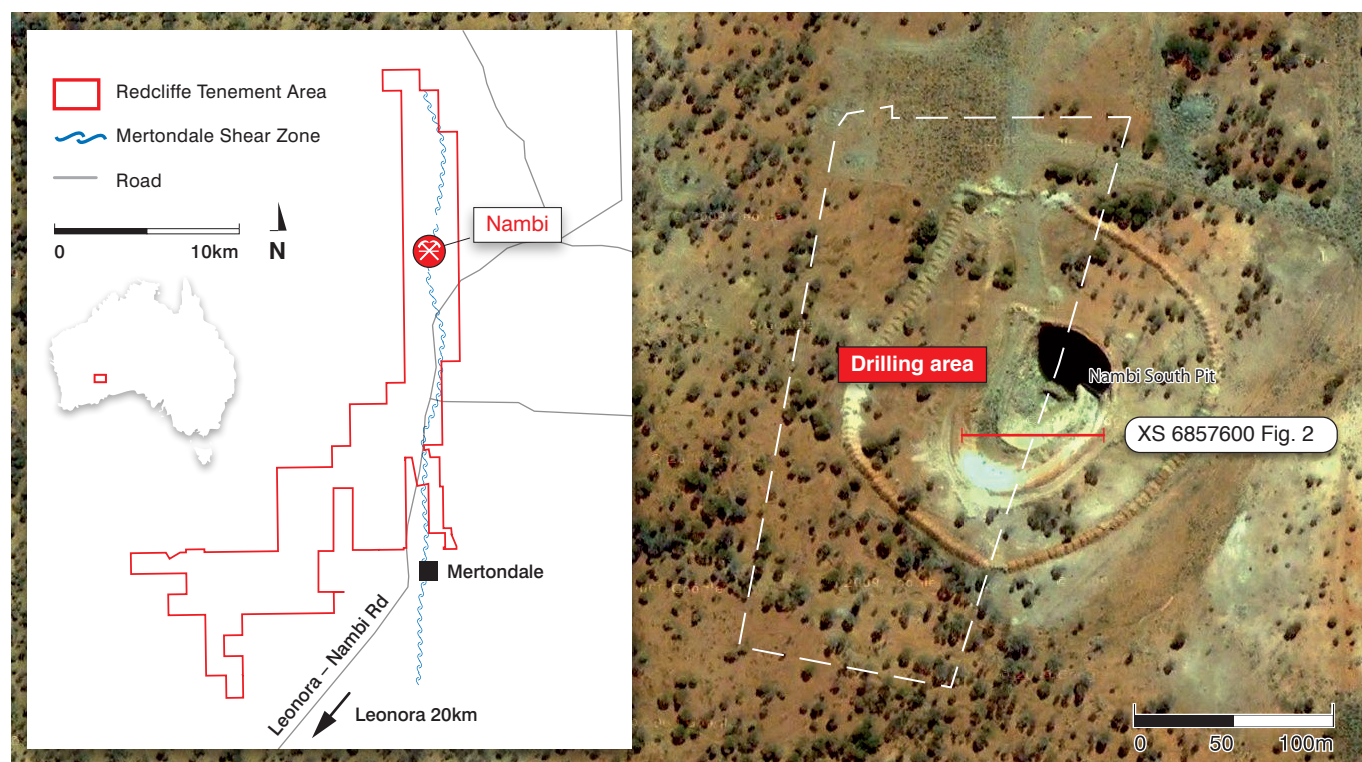


Figure 1: Nambi South Pit location and drilling area.

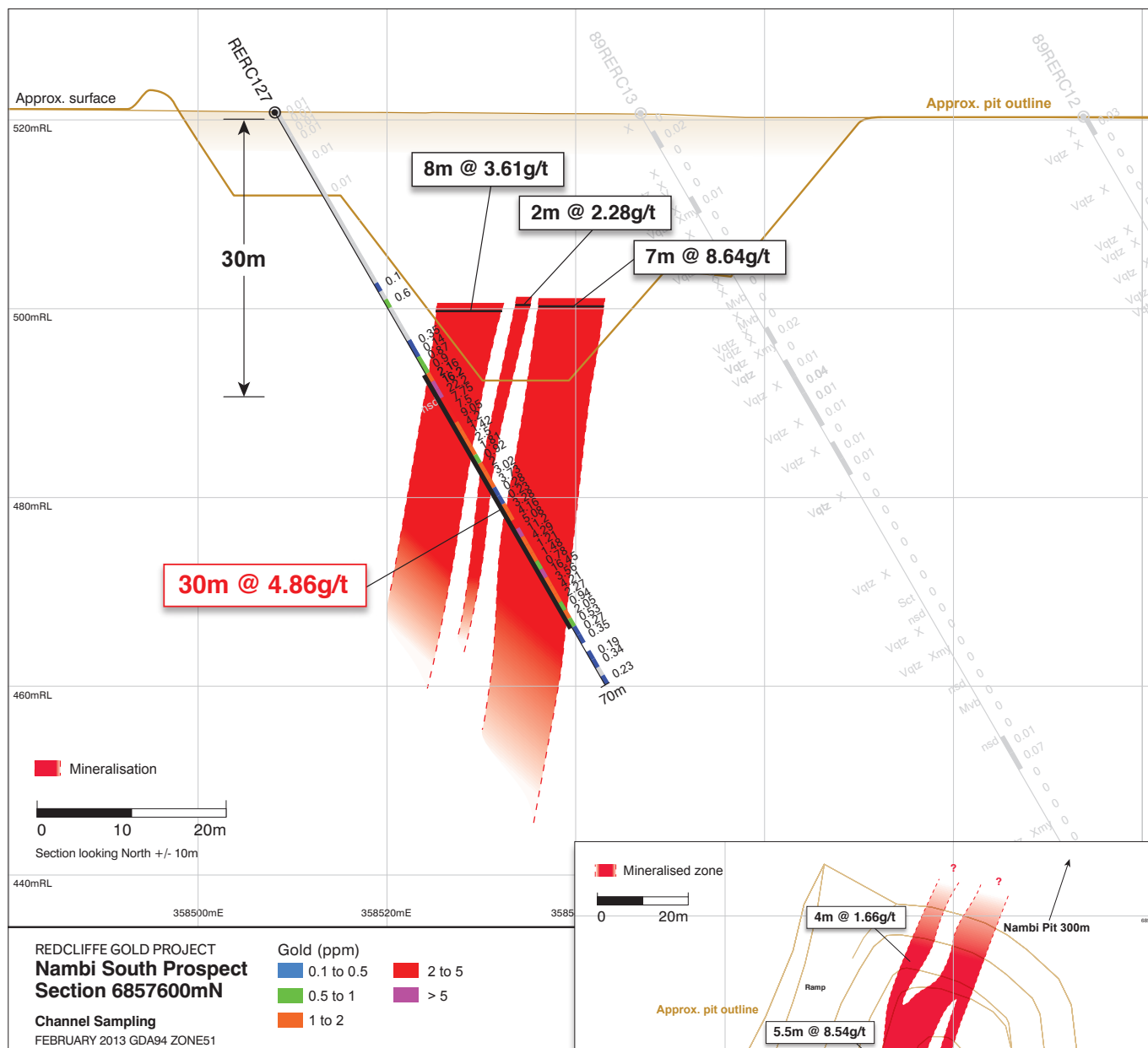


Figure 2: Nambi South Cross Section 6857600N.

The Nambi South (test) pit is located approximately 400 metre along strike from the main Nambi Pit. It would appear to Redcliffe that Nambi South was excavated prior to demobilising machinery from the main major Nambi Pit late last century.

Nambi, is within the Redcliffe Gold Project located approximately 40km north east of Leonora in the Eastern Goldfields of Western Australia. The initial area of exploration is illustrated in figure 1. Results from the programme are expected in the first half of March 2013.

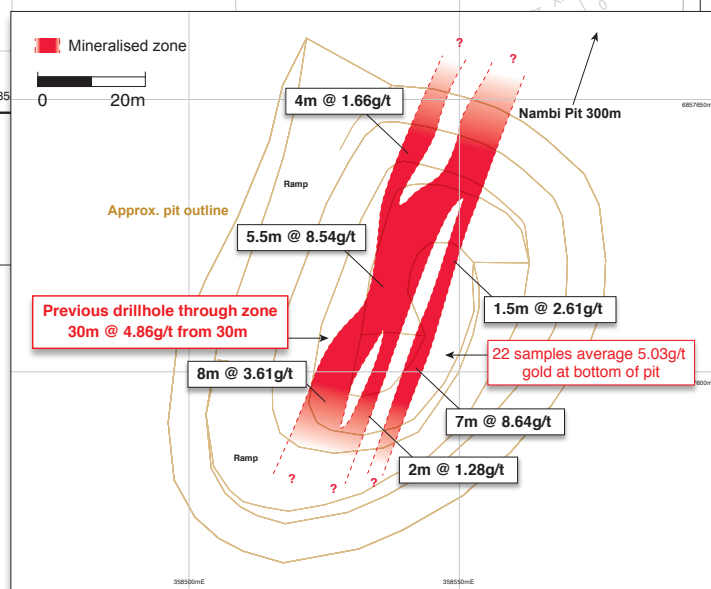


Figure 3: Nambi South Test Pit Plan.

Mark Maine Executive Director

Competent Persons Statement:

The information in this report, as it relates to Exploration Results and Resource Estimates, is based on information compiled and/or reviewed by Rodney Foster who is a Member of the Australasian Institute of Mining and Metallurgy. Rodney Foster is the CEO/Chairman of the Company. He has sufficient experience which is relevant to the style of mineralisation and type of deposit under consideration and to the activity which he is undertaking to qualify as a Competent Person as defined in the 2004 Edition of the 'Australasian Code of Reporting of Exploration Results', Mineral Resources and Ore Reserves'. Rodney Foster consents to the inclusion in the report of the matters based on his information in the form and context in which they appear.