

**ASX Release**

28 October 2010

**COVENTRY RESOURCES  
LIMITED**

Level 2 / 675 Murray Street  
WEST PERTH  
Australia  
Tel: +61 8 9324 1266  
Fax: +61 8 9226 2027

**Contact:**

Mike Haynes  
Executive Chairman

E-mail:  
[info@coventryres.com](mailto:info@coventryres.com)

Tel: +61 8 9324 1266

For the latest news:  
[www.coventryres.com](http://www.coventryres.com)

**Directors / Officers:**

Michael Haynes  
Tony Goddard  
Rhoderick Grivas  
Faldi Ismail  
Nick Day

**Issued Capital:**  
127.28 million shares  
30.87 million options

**ASX Symbol:** CVY

**DRILLING CONTINUES TO INTERSECT  
SHALLOW HIGH-GRADE MINERALISATION AT THE  
+1Moz CAMERON GOLD PROJECT****Highlights**

- Analytical results received from a further 20 diamond core holes drilled at the Cameron Gold Project (2,144 metres).
- Further shallow high-grade gold mineralisation intersected at the Cameron Gold Deposit, with better results including:
  - 16.0 metres at 5.68 g/t gold from 8.0 metres, including 8.0 metres at 9.64 g/t gold from 9.0 metres
  - 4.0 metres at 11.99 g/t gold from 18.0 metres, including 2.0 metres at 22.70 g/t gold from 19.0 metres
  - 6.0 metres at 6.28 g/t gold from 138.0 metres
  - 3.0 metres at 8.04 g/t gold from 14.0 metres
- First pass drilling at the Beggs Prospect has been completed – analytical results are pending for all 10 holes (1,412 metres).
- Drilling is currently progressing at the Burke Prospect, with 2 diamond core holes completed to date for 481 metres – analytical results are pending.
- Numerous additional regional targets have been advanced so they can be systematically drill-tested following evaluation of the Burke Prospect.
- The Company continues to be exceptionally encouraged by the results from the current drilling program and its assessment of the potential of other targets within the Cameron Gold Project.

Coventry Resources Limited (ASX: CVY and the “Company”) is pleased to advise that it has received additional analytical results from its inaugural and ongoing 20,000 metre drilling program at its 100% owned +1Moz Cameron Gold Project in Ontario, Canada.

The Company has now completed eighty nine (89) diamond core drill holes at the Project for a total of 13,223 metres.

Analytical results for a further 20 drill holes were received recently (drill holes CCD-10-056 – CCD-10-077), comprising results from a further 2,144 metres of drilling. These holes were drilled to further evaluate the shallow mineralisation at the Cameron Gold Deposit, in areas where only limited previous drilling data was available. This recent drilling will facilitate the upgrade of the classification of resources in this region to “indicated” and “measured” categories.

Significant shallow mineralisation has been intersected in these recently completed drill holes (see Table 2). Better results include:

- 16.0 metres at 5.68 g/t gold from 8.0 metres, including 8.0 metres at 9.64 g/t gold from 9.0 metres
- 4.0 metres at 11.99 g/t gold from 18.0 metres, including 2.0 metres at 22.70 g/t gold from 19.0 metres

- 6.0 metres at 6.28 g/t gold from 138.0 metres
- 3.0 metres at 8.04 g/t gold from 14.0 metres
- 6.0 metres at 5.64 g/t gold from 126.0 metres
- 6.0 metres at 4.57 g/t gold from 117.0 metres

These results confirm that there is substantial shallow, high-grade gold mineralisation within the Cameron Gold Deposit that is expected to be amenable to open pit mining.

### **Current Focus of Drilling Program**

The +1Moz Cameron Gold Deposit is associated with the Cameron and Monte Cristo Shear Zones, an extensive, gold-fertile geological structural corridor that extends over more than 20 kilometres of strike in an east to north-easterly direction. These shear zones are host to more than twenty (20) other known but underexplored gold occurrences and prospects (see Figure 2), and have a number of geological and structural characteristics that are highly-prospective for gold mineralisation.

Since acquiring a 100% interest in the Cameron Gold Deposit in April 2010, the Company has successfully quadrupled its land holding at the Project (to more than 12,800 hectares) to incorporate many of these underexplored regional targets. **There is considerable potential to discover additional resources at these targets.**

Having recently compiled available historic information from many of these targets, as well as acquiring additional geological and geophysical information over them, the Company has now commenced systematically evaluating these targets with drilling.

The Company's first pass drilling at the Beggs Prospect has now been completed, with ten (10) diamond core holes drilled for 1,412 metres. Analytical results are pending for all holes. Better results in limited historic drilling at the Beggs Prospect include:

- 3.2 metres at 17.45 g/t gold, and
- 2.5 metres at 8.79 g/t gold.

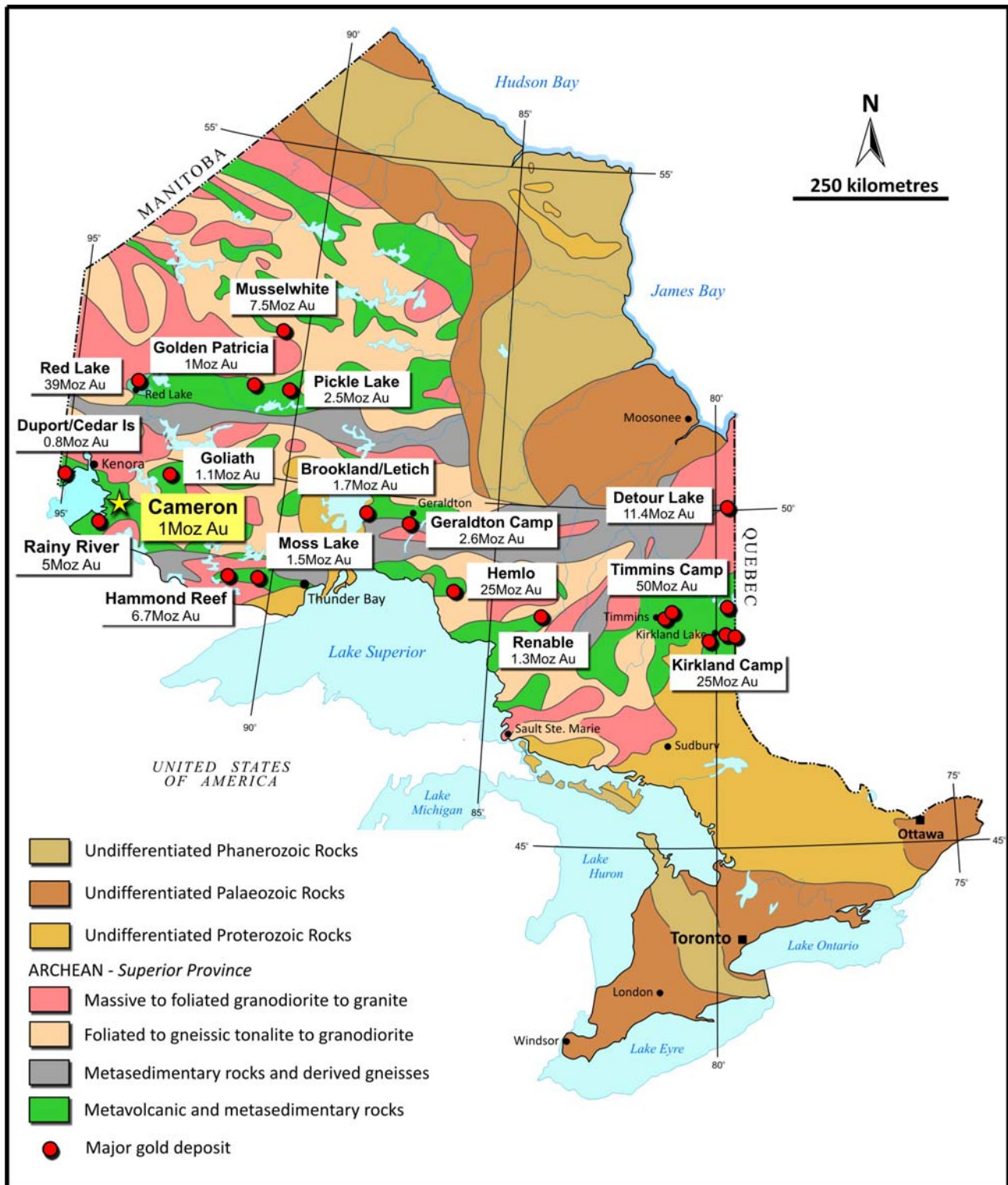
Drilling is currently targeting the second of these regional prospects – the Burke Prospect. The only hole drilled previously at the Burke Prospect intersected six mineralised zones with tenor greater than 1.0 g/t gold, including:

- 3.5 metres at 13.72 g/t gold and
- 0.7 metres at 107.4 g/t gold

To date the Company has completed two (2) diamond core drill holes at the Burke Prospect, for 481 metres. Analytical results are pending for all holes, and drilling continues.

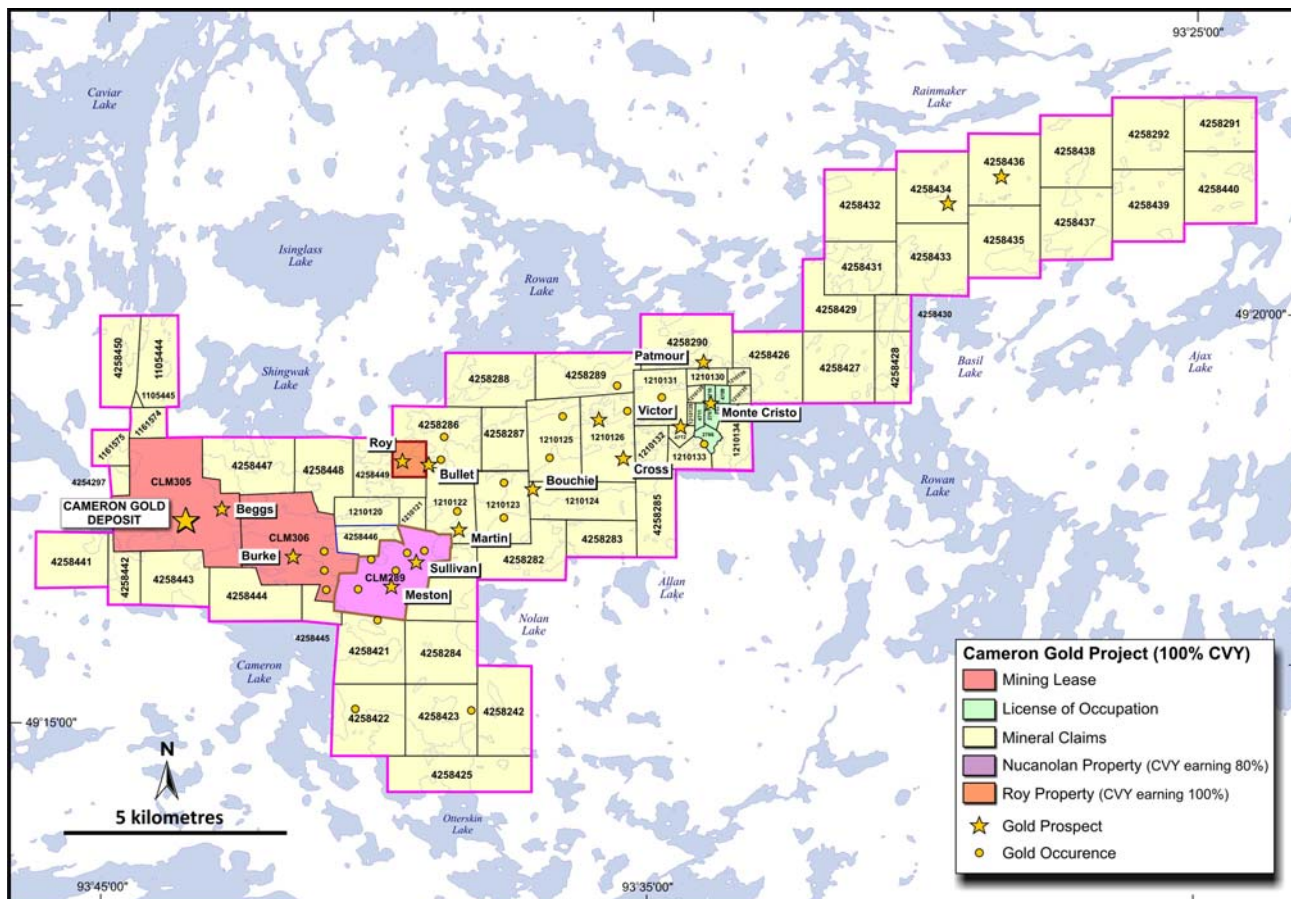
Numerous other regional targets along the Cameron and Monte Cristo Shear Zones are simultaneously being advanced. Drill testing of these will be systematically undertaken following completion of drilling at the Burke Prospect.

**Mike Haynes**  
Executive Chairman

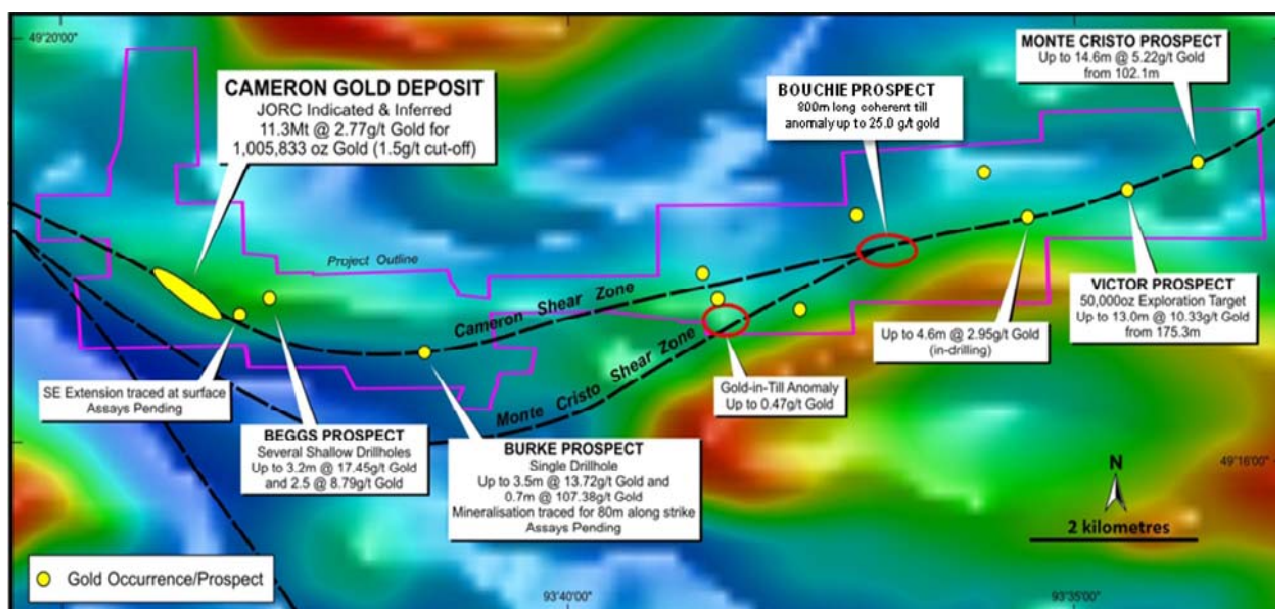


**Figure 1.** Location of the Cameron Gold Deposit in Ontario, Canada, with other significant deposits in the Western part of the Superior Province.





**Figure 2.** Cameron Gold Project area showing the location of known gold deposits, prospects and occurrences within the gold corridor related to the Cameron and Monte Cristo Shear Zones.



**Figure 3.** Summary plan showing the characteristics of some of the known gold deposits, prospects and occurrences along the Cameron and Monte Cristo Shear Zones within the Company's Cameron Gold Project (note the Company has increased the area of its Project considerably since this plan was prepared).

**Table 1.** Drill hole collar and depth information for the reported holes at the Cameron Gold Project.

Hole Number	Easting (NAD83 Zone 15)	Northing (NAD83 Zone 15)	Easting (Local)	Northing (Local)	Inclination	Azimuth	Total Depth
CCD-10-056	447122	5460030	99940	50240	-60	225	77
CCD-10-057	447136	5460016	99940	50220	-60	225	101
CCD-10-058	447122	5460001	99920	50220	-60	225	62
CCD-10-059	447144	5459995	99930	50200	-60	225	74
CCD-10-060	447158	5460009	99950	50200	-60	225	101
CCD-10-061	447249	5460100	100080	50200	-60	225	212
CCD-10-062	447150	5460058	99980	50240	-60	225	122
CCD-10-063	447158	5459981	99930	50180	-60	225	101
CCD-10-064	447193	5459987	99960	50160	-60	225	111
CCD-10-065	447158	5459952	99910	50160	-60	225	62
CCD-10-066	447165	5459931	99900	50140	-60	225	59
CCD-10-067	447221	5459987	99990	50140	-60	225	152
CCD-10-068	447228	5459966	99970	50120	-60	225	101
CCD-10-069	447186	5459924	99910	50120	-60	225	61
CCD-10-070	447271	5459896	100000	50080	-60	225	71
CCD-10-071	447278	5459931	99960	50040	-60	225	77
CCD-10-072	447278	5459959	99980	50060	-60	225	92
CCD-10-073	447313	5459995	100050	50080	-60	225	140
CCD-10-074	447370	5459995	100090	50040	-60	225	207
CCD-10-075	447341	5459966	100050	50040	-60	225	161
CCD-10-076	447476	5459931	100120	49920	-60	225	191
CCD-10-077	447447	5459958	100120	49960	-60	225	200

**Table 2.** Significant intersections greater than 1.0 g/t gold for the holes reported from the Cameron Gold Project, applying a 0.5 g/t gold cut-off and two metres maximum of internal dilution.

Hole Number	From (m)	To (m)	Interval (m)	Au (g/t)
CCD-10-056 <i>including</i>	2.1	3.1	1.0	1.46
	9.9	13.9	4.0	2.42
	10.9	11.9	1.0	5.19
	16.9	17.9	1.0	4.77
	32.9	33.9	1.0	3.87
	47.0	48.0	1.0	4.80
CCD-10-057	2.8	4.8	2.0	1.84
	17.2	19.2	2.0	7.99
CCD-10-058	No Significant Assays			
CCD-10-059 <i>including</i>  <i>including</i>	5.0	12.0	7.0	2.67
	10.0	12.0	2.0	6.46
	21.0	28.0	7.0	2.17
	21.0	23.0	2.0	5.73
	39.0	42.0	3.0	1.14
	60.7	63.1	2.4	2.13

CCD-10-060	20.0	23.0	3.0	2.03
	26.0	28.0	2.0	2.90
	68.0	71.0	3.0	1.02
	88.0	91.0	3.0	1.57
CCD-10-061	126.9	130.0	3.1	1.19
	Void from 122.2-126.9m			
	134.0	145.0	11.0	1.64
	149.0	163.5	14.5	1.61
	167.8	171.8	4.0	2.58
	201.0	202	1.0	1.01
CCD-10-062	53.0	54.0	1.0	1.22
CCD-10-063	8.0	11.0	3.0	2.30
	14.0	17.0	3.0	8.04
CCD-10-064 <i>including</i>	18.0	22.0	4.0	11.99
	19.0	21.0	2.0	22.70
CCD-10-065	1.0	2.0	1.0	7.85
	4.0	5.0	1.0	1.00
CCD-10-066	11.0	12.0	1.0	1.53
CCD-10-067	33.0	34.0	1.0	9.67
	47.0	48.0	1.0	1.66
	78.0	79.0	1.0	1.05
	83.0	85.0	2.0	2.16
	94.0	97.0	3.0	1.46
	114.0	115.0	1.0	1.82
	120.0	121.0	1.0	6.84
CCD-10-068	18.0	21.0	3.0	2.17
	66.0	71.0	5.0	2.33
	89.0	91.0	2.0	3.48
CCD-10-069 <i>including</i>	8.0	24.0	16.0	5.68
	9.0	17.0	8.0	9.64
	30.0	34.0	4.0	3.17
CCD-10-070	No Significant Assays			
CCD-10-071	19.0	22.0	3.0	6.52
	25.0	26.0	1.0	3.15
CCD-10-072	37.0	47.0	10.0	2.00
CCD-10-073 <i>including</i>	101.0	103.0	2.0	3.64
	117.0	122.0	6.0	4.57
	118.0	119.0	1.0	13.90
	126.0	132.0	6.0	5.64
CCD-10-074 <i>including</i>	138.0	142.0	6.0	6.28
	140.0	141.0	1.0	19.80
CCD-10-075	99.0	100.0	1.0	2.38
	104.0	107.0	3.0	1.52
	111.0	112.0	1.0	5.99
CCD-10-076	65.2	68.2	3.0	1.31
CCD-10-077	163.1	165.6	2.5	1.14

\* includes 1m void

**Table 3.** JORC code compliant resource estimate for the Cameron Gold Deposit applying various cut-off grades.

<b>Cut-off grade (g/t gold)</b>	<b>Category</b>	<b>Tonnes</b>	<b>Grade (g/t gold)</b>	<b>Ounces of gold</b>
<b>0.5</b>	Indicated	7,221,000	2.26	523,477
	Inferred	13,311,000	1.84	786,150
	<b>Total</b>	<b>20,531,000</b>	<b>1.98</b>	<b>1,309,627</b>
<b>1.0</b>	Indicated	5,818,000	2.61	488,366
	Inferred	10,585,000	2.11	719,457
	<b>Total</b>	<b>16,403,000</b>	<b>2.29</b>	<b>1,207,823</b>
<b>1.5</b>	Indicated	4,164,000	3.16	422,353
	Inferred	7,148,000	2.54	583,480
	<b>Total</b>	<b>11,312,000</b>	<b>2.77</b>	<b>1,005,833</b>
<b>2.0</b>	Indicated	2,978,000	3.72	356,169
	Inferred	3,870,000	3.27	406,457
	<b>Total</b>	<b>6,848,000</b>	<b>3.46</b>	<b>762,626</b>

#### **Sample Analyses and Quality Control**

All NQ drillcore is geologically logged, marked up and cut (half core) by company personnel at the facilities on site the Cameron Gold Project. Half of the cut core is submitted for analysis, with the remaining half core being stored at Cameron.

Core samples are prepared and analysed by Activation Laboratories (Actlabs), Thunder Bay, Ontario, an ISO 17025 Accredited Laboratory. Samples are dried and crushed (~2mm) with a 250g split portion of the sample pulverised to 95% passing 150 microns. Samples are submitted for analysis for gold by gravimetric fire assay (code 1A3).

Certified reference material standards, blanks and duplicate samples are inserted every 20 samples, respectively.

#### **Competent Persons Statement**

The information in this announcement that relates to exploration results is based on information compiled by or under the supervision of Anthony Brendon Goddard. Mr Goddard is Technical Director of Coventry Resources Limited and a Member of the Australian Institute of Geoscientists. Mr Goddard has sufficient experience which is relevant to the style of mineralisation and type of deposit under consideration and the activity he is undertaking to qualify as a Competent Person as defined in the 2004 Edition of the "Australasian Code for Reporting of Exploration Results, Mineral Resources and Ore Reserves" and a Qualified Person as defined in the Canadian National Instrument 43-101 (standards of disclosure for Mineral Projects). Mr Goddard consents to the inclusion in the report of the matters based on his information in the form and context in which it appears.

The information in this report that relates to Mineral Resources or Ore Reserves is based on information compiled by Mr Peter Ball who is a Member of the Australasian Institute of Mining and Metallurgy. Mr Peter Ball is the Manager of Data Geo. Mr Peter Ball has sufficient experience which is relevant to the style of mineralisation and type of deposit under consideration and to the activity which he is undertaking to qualify as a Competent Person as defined in the 2004 Edition of the 'Australasian Code for Reporting of Exploration Results, Mineral Resources and Ore Reserves'. Mr Peter Ball consents to the inclusion in the report of the matters based on his information in the form and context in which it appears.